

## 2 Installation and Connections

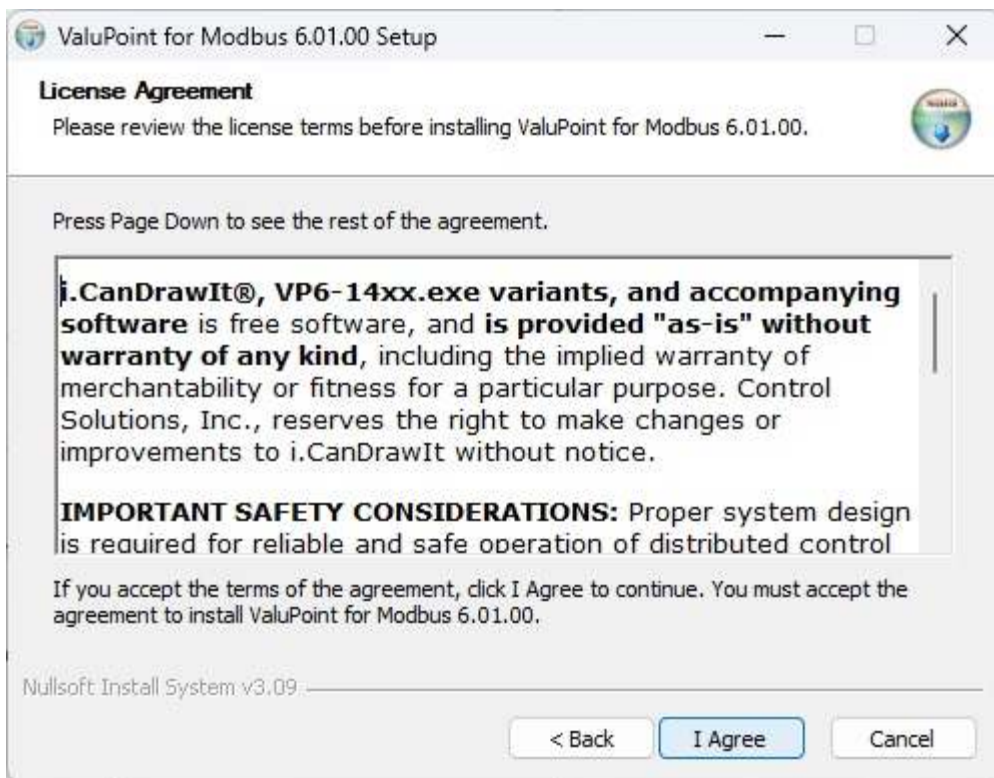
### 2.1 Installing the software

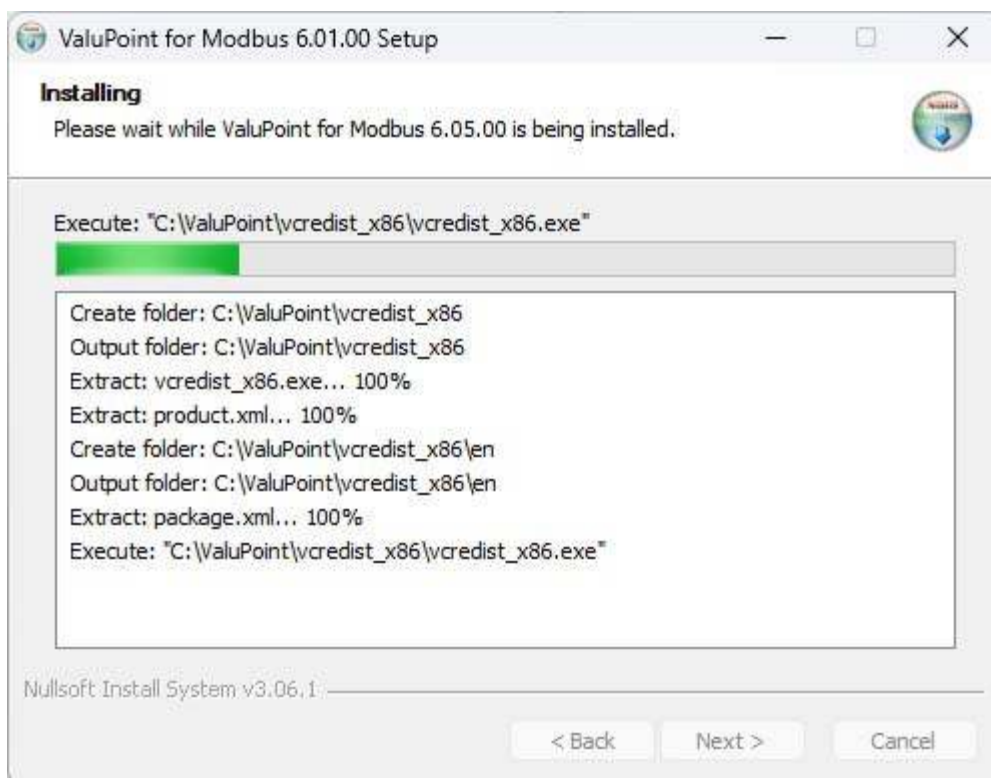
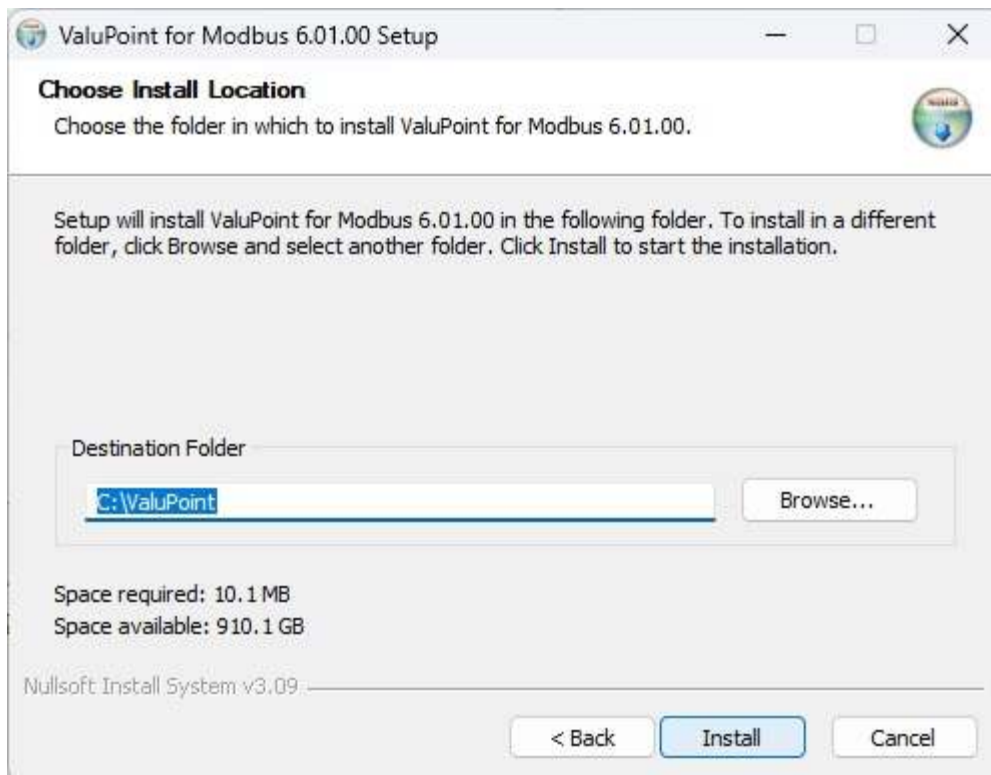
Look for the installer icons in the directory where you unzipped the download that got you to this document. The installer icons look like this:



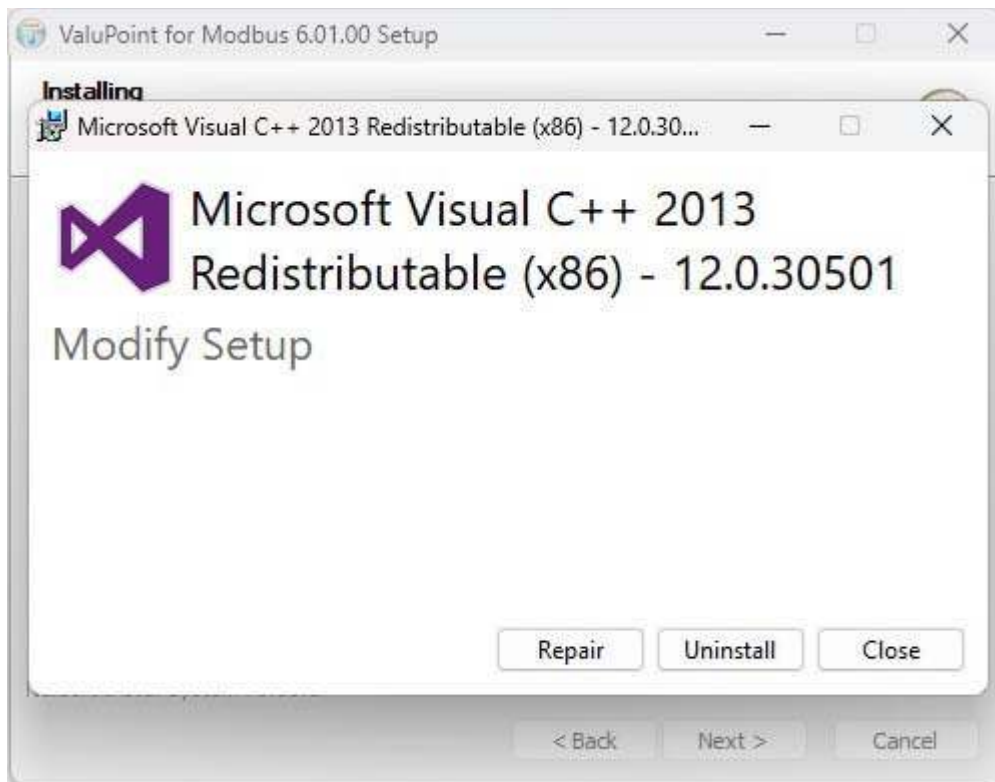
The installation is a 2-step installation. Install VP6-1460 first. Then install i.CanDrawIt second.

Double click the icon to run the VP6-1460\_setup.exe. You will be questioned about whether to continue because Windows cannot verify the publisher of the software. Permit installation to continue. The sequence of installer screens include the following on Windows 11:

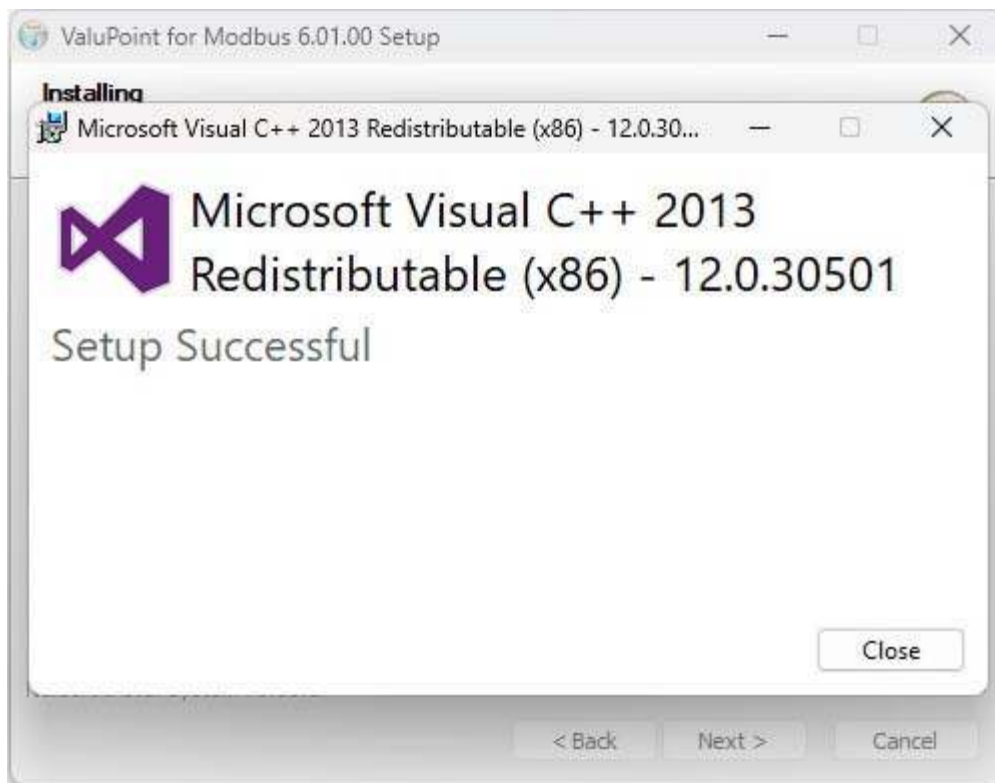




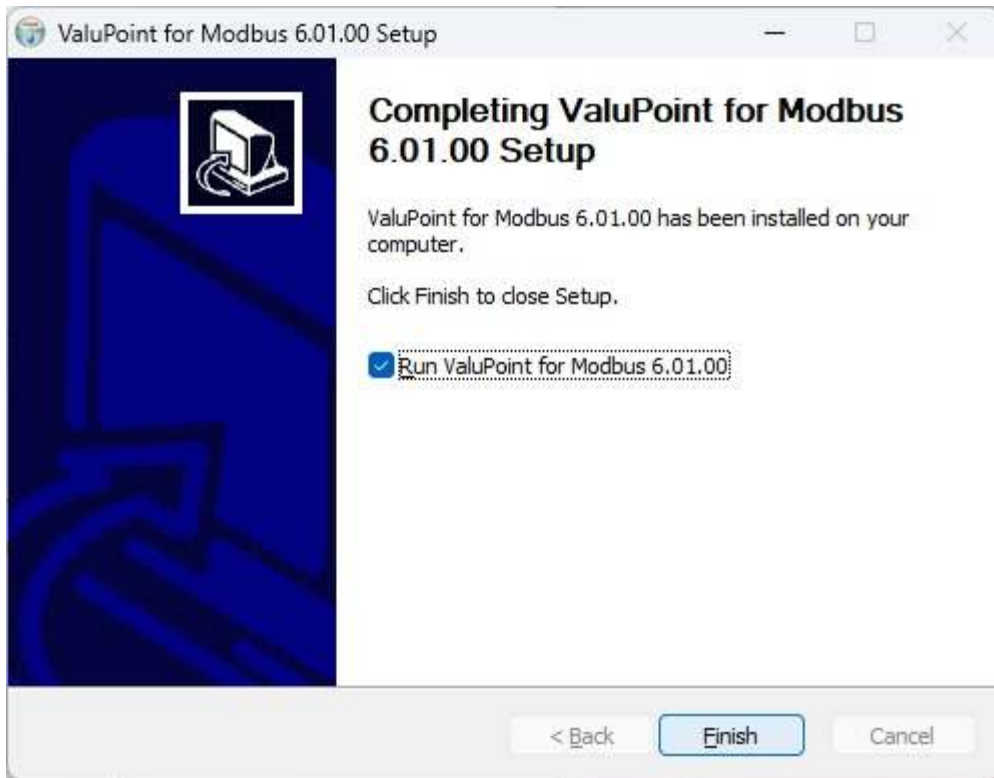
The installer will check to see whether Visual C++ support is already installed on your system, and install it if not. This is standard software provided by Microsoft. If it is already there, it will give you the option to "Repair". Select Repair (which in most cases will not really do anything other than verify the installation).



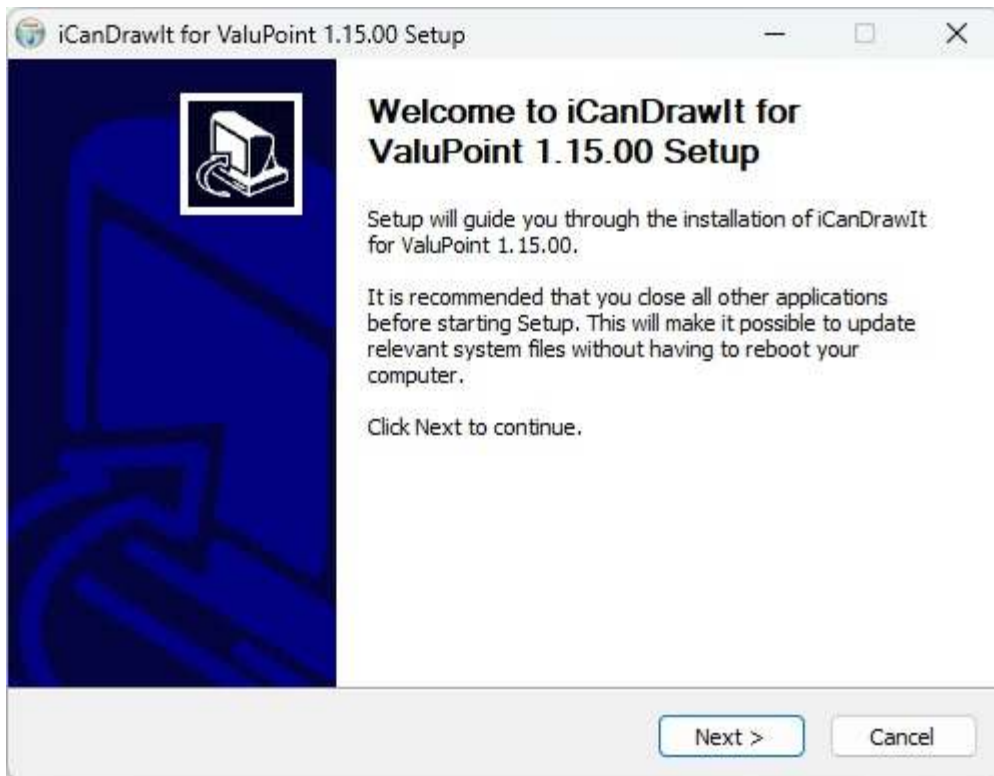
Click Close to continue the installation.



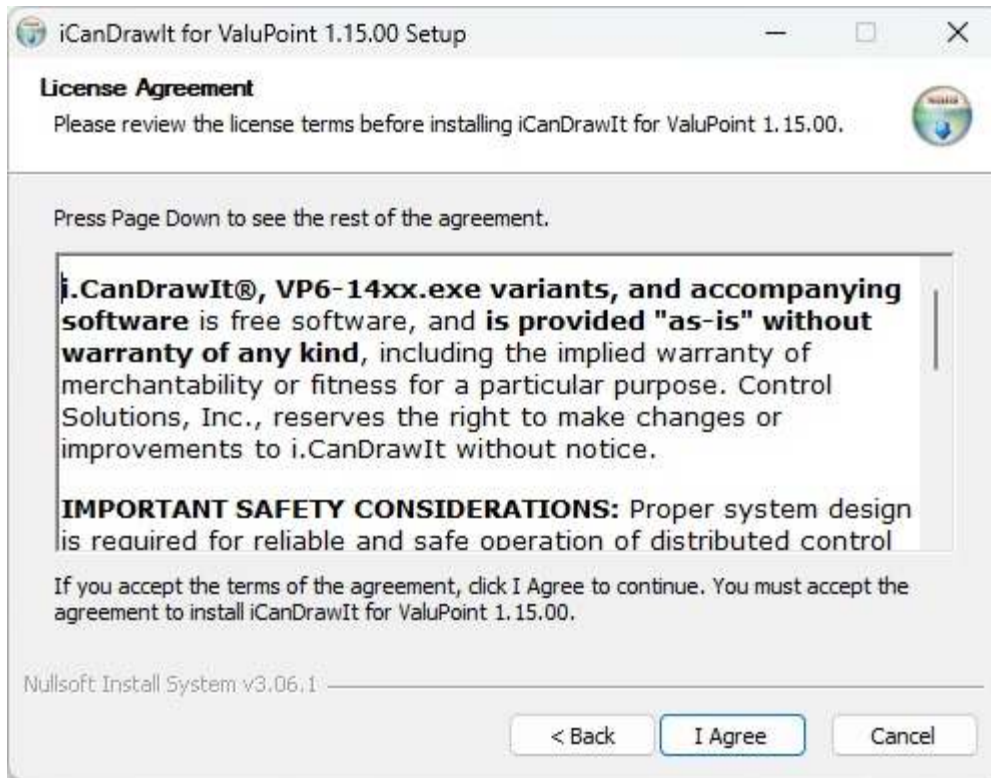
When you get to the "Finish" screen, you are ready to go.



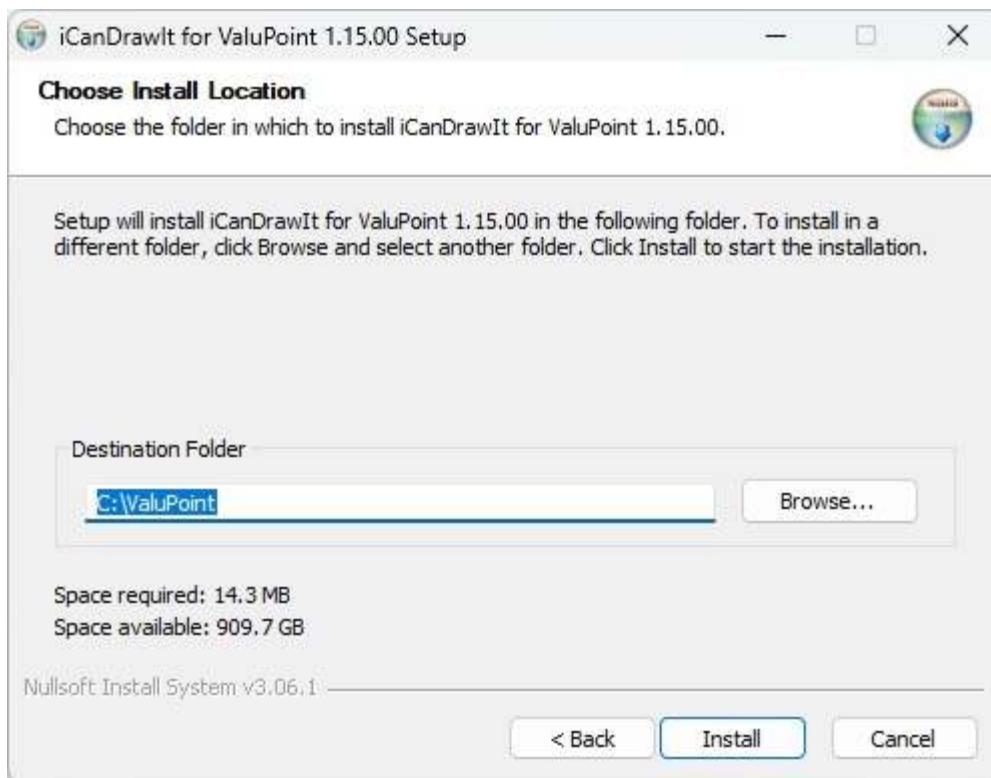
Next, proceed to install i.CanDrawIt. The first installer screens look like this:







The installation directory should be the same directory that VP6-1410 was installed into.



After a few more screens that look much like the VP6-1410 screens above, you will get the familiar 'done' screen.

