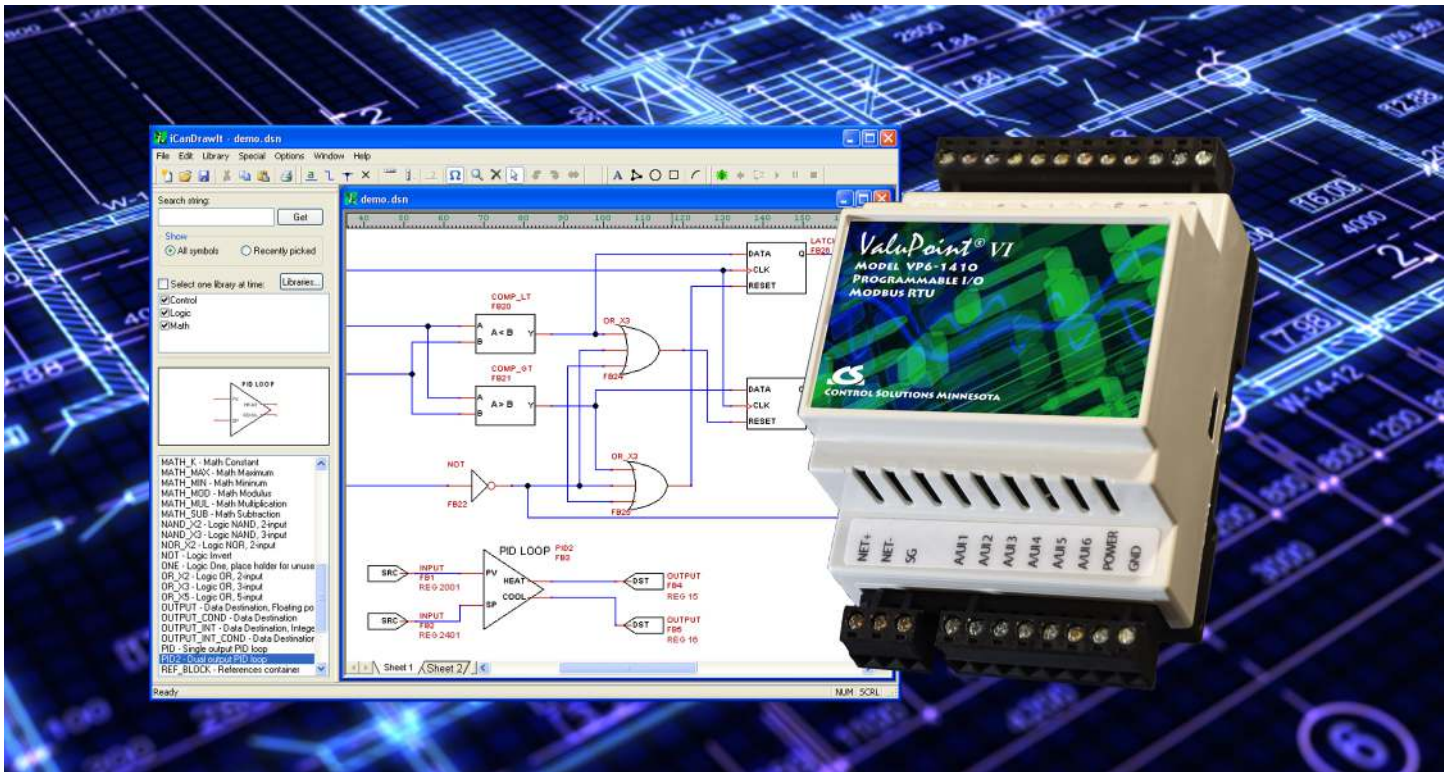


ValuPoint® VI

MODEL VP6-1410

PROGRAMMABLE I/O

MODBUS RTU



ValuPoint® Model VP6-1410

Control Solutions' Model VP6-1410 ValuPoint® Programmable I/O for Modbus RTU operates as a master or slave for I/O expansion, or as a controller with soft PLC capability. The VP6-1410 features 12 universal inputs that may be configured as analog or discrete, and 2 Form A relay outputs.

Software Features of Model VP6-1410

- Modbus RTU Master or Slave
- Freely programmable - *i.CanDrawIt*® graphical programming
- Includes uncommitted registers for soft PLC use
- All registers accessible as 16-bit or 32-bit including IEEE754
- Modbus Master can query registers in other Modbus devices
- Local registers mirror data mapped from other devices
- Registers accessible as coils, discretes, holding registers

Hardware Features of Model VP6-1410

- 12 Analog/universal inputs, software selectable types
 - 0-10VDC, thermistor, discrete, dry contact, pulse
 - 0.1% reference, 12-bit resolution
 - Non-volatile totalizing count inputs (to 2Hz on all channels, to 1kHz on 4 channels)
- 2 Discrete outputs
 - Form A relay
 - 2A @ 120VAC
 - 2A @ 30VDC
- Battery backed real time clock/calendar
- Modbus RTU at 1200 to 115200 baud
- Isolated RS-485 port
- 512KB non-volatile EEPROM configuration file capacity
- 64K Flash for User Program
- ARM 32-bit processor, 1MB Flash, 256K RAM
- Powered by 18-30VDC or 24VAC 50/60 Hz Class 2, 0.3A max.
- DIN rail mounting, 100mm H x 105mm W x 60mm D
- -40C to +80C, 5%-95% RH non-condensing
- FCC Class A, CE Mark
- Listed to UL 916 and (Canadian) C22.2 No. 205-M1983



ValuPoint® VI
MODEL VP6-1410
PROGRAMMABLE I/O
MODBUS RTU



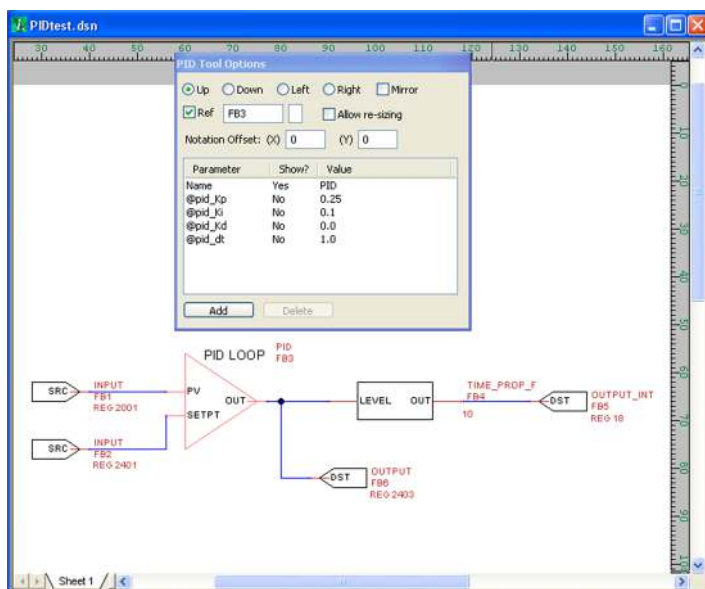
ValuPoint® - An Outstanding Value

The ValuPoint® series of controllers is designed to be a building block in a distributed control system. The VP6-1410 can be used as Modbus slave for system expansion, or as Modbus master for stand-alone applications. When configured as Master, the VP6-1410 can query other Modbus devices, and use local registers to mirror mapped registers in remote devices.

All of the ValuPoint features available to local objects are also available to the remote mapped objects. This means the remote objects can be incorporated into the local i.CanDrawIt® program.

The VP6-1410 has a total of 500 data objects, of which the first several are assigned to physical I/O points. The remaining objects may be used as local storage for the soft PLC program, or may be used to mirror remote registers in other Modbus slaves. Each data object may be accessed as 16-bit or 32-bit integer, or floating point. Discrete points may be read as holding registers, coils, or discrete inputs. Analog points may be read as holding or input registers.

ValuPoint® support software, available for download at no cost, includes the VP6-1410 configuration tool, i.CanDrawIt graphical programming tool, and the pliWrite line programming tool. Both programming tools support both simulated execution and live debug. The tools connect via any serial COM port with an RS485 adapter.



i.CanDrawIt®

i.CanDrawIt® works just like an electrical schematic CAD program, except you draw control programs that look like circuits. The resulting software will function like the circuit you draw. i.CanDrawIt® includes visual program simulation as well as visual live debugging where supported by the target device. Set breakpoints or step through the program one visual function block at a time. Update variables and I/O objects in simulation or live.

- Draw control programs
- Electrical CAD look and feel
- Ladder style, free form logic, or hybrid
- Compile code from drawings
- Simulate functions block by block
- Run to break point
- Run until paused
- Inspect or change variables
- Inspect or change registers (object's value property)
- Draw new function blocks
- Library source code included

i.CanDrawIt® is included at no additional cost with every ValuPoint® controller from Control Solutions Minnesota.

- No supporting software to buy
- No license fees, no run-time licenses
- Includes no-fee online support
- No time limits, no functional limits or disabled features

Visit our web site for

- Full details
- On-line Ordering

www.csimn.com



CONTROL SOLUTIONS MINNESOTA

PO BOX 10789

ST. PAUL, MN 55110-0789

VOICE (651) 426-4410 • FAX (651) 426-4418

TOLL FREE 1-800-872-8613

© 2024 Control Solutions, Inc. ValuPoint® is a registered trademark of Control Solutions, Inc. Modbus® is a registered trademark of Modbus Organization, Inc.