

i.Report V4 Satellite/Cellular Global Remote Telemetry Model VP4-2090



CONTROL SOLUTIONS, INC.
MINNESOTA



PRELIMINARY



Control Solutions' i.Report V4 Satellite/Cellular Global Remote Telemetry Unit, Model VP4-2090, offers an array of advanced features:

- Remote monitoring and data logging
- Cellular and satellite connectivity options:
 - Satellite only
 - Cellular only
 - Cellular with satellite backup
- GPS tracking and geo-fencing for mobile apps
- Store and forward logging
- 2GB data flash for event and data logging
- Battery backed real time clock for timestamps
- Programmable soft PLC included
- Modbus RTU master/slave port
- J1939 Engine monitoring port
- Over the air (GSM/satellite) control
- Over the air (GSM) firmware update
- GSM/GPRS or CDMA cellular data modem
- LEO Satellite transceiver (Iridium)
- Garmin GPS receiver
- 16 Universal inputs
 - 0-10VDC, thermistor, dry contact
 - 4-20mA with external resistor
 - 16-bit sigma-delta converter
 - Continuously self calibrating
- 2 Fixed analog inputs, 0-30VDC input range
- 2 Discrete outputs, 30VDC 1A open drain FET
- Internal temperature sensor
- Hardened RS-485 serial port (Modbus RTU)
- CAN 2.0b communications port (J1939)
- USB port (connects to laptop for service)
- 32-bit ARM7 processor, 512K Flash
- 2GB data flash for event/data logging
- 128K EEPROM for configuration storage
- Operates from 10-30VDC or 12-24VAC
- NEMA 4X, IP66, IP68 Enclosure

**i.Report V4
Satellite/Cellular
Global Remote Telemetry
Model VP4-2090**

PRELIMINARY



Global Remote Telemetry Unit

- LOCAL COMM REQUEST ● SYSTEM HEARTBEAT ● CELLULAR LINK
- LOCAL COMM REPLY ● SYSTEM STATE ● CELLULAR POWER
- LOCAL COMM ERROR ● CONNECTION STATUS ● SATELLITE LINK
- CONNECTION ERROR

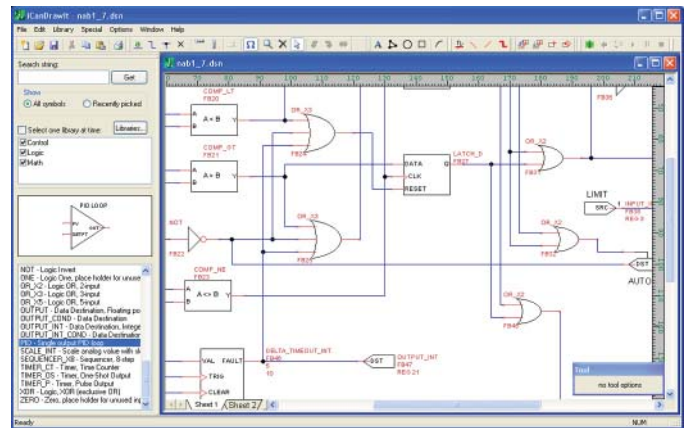
Front panel LEDs indicate satellite and cellular connection status and progress, overall system state, and local Modbus communication activity.

Control Solutions' i.Report V4 Model VP4-2090 Global Remote Telemetry Unit is ideal for demanding remote alarm monitoring and data logging with optional GPS tracking. It includes both cellular and satellite radios built in. The model VP4-2090 can operate on cellular only, satellite only, or cellular with satellite backup for mobile applications. The built-in Garmin GPS receiver provides tracking data for mobile applications.

The VP4-2090 includes 18 hardware sensor inputs, of which 16 are universally configurable as analog, temperature (thermistor), or discrete/dry contact inputs. Two are fixed analog with 30V input range for directly monitoring batteries. The VP4-2090 also includes 2 discrete outputs for functions such as generator start on command or local alarm indicator.

The VP4-2090 includes a Modbus RTU port which may operate in master or slave mode. The VP4-2090 may poll multiple Modbus slaves to greatly expand I/O capability. The VP4-2090 may also operate as a slave allowing a PLC in a larger system to write data to the VP4-2090. The VP4-2090-R2 also includes CAN 2.0b for J1939 engine monitoring features.

The VP4-2090 supports store and forward logging. Data will be reported at regular intervals via cellular when coverage is available. When a mobile unit leaves cellular coverage, the VP4-2090 will log data to its internal 2GB data flash, and upload stored data when service is found. Meanwhile, critical alarms and data points will be reported via satellite while non-critical events and log data are stored for later forwarding.



The i.Report V4 model 2090 includes a field programmable soft PLC. Control Solutions' i.CanDrawIt® graphical programming tool is used to easily create programs.

Visit our web site for

- Full details
- User Guides & Software Downloads
- Pricing
- On-line Ordering

www.csimn.com



CONTROL SOLUTIONS, INC.

980 E. BERWOOD AVE., SUITE 100 • PO BOX 10789

ST. PAUL, MN 55110-0789

VOICE (651) 426-4410 • FAX (651) 426-4418

TOLL FREE 1-800-872-8613

© 2010 Control Solutions, Inc.