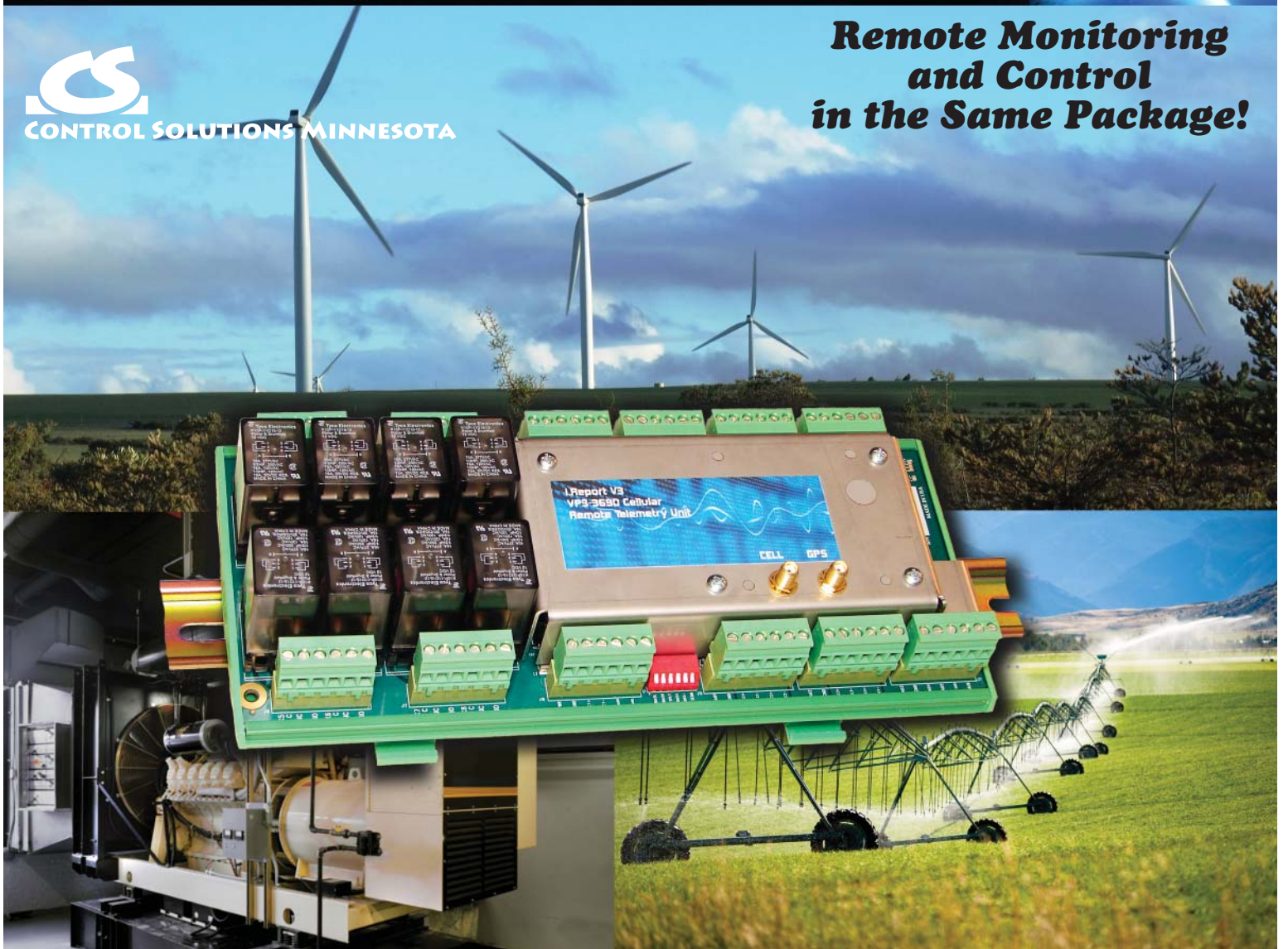


# i.Report Cellular/Satellite Global Remote Telemetry & Control Model VP3-3690



CONTROL SOLUTIONS MINNESOTA

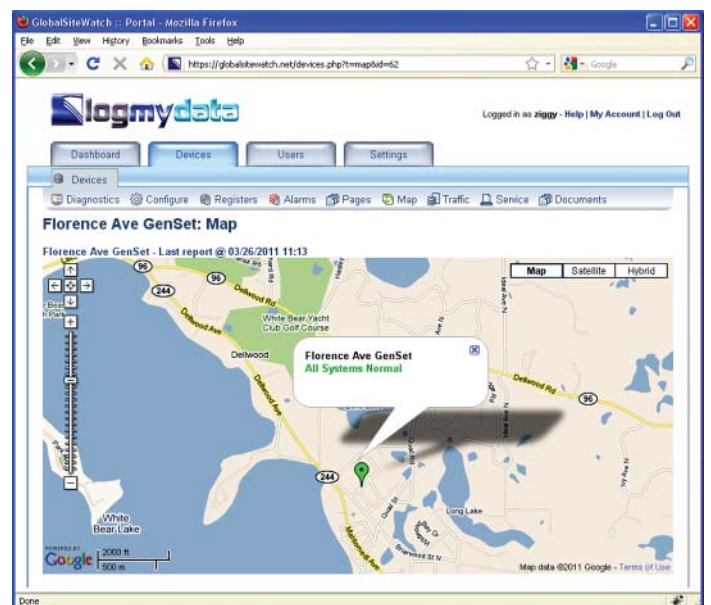
## Remote Monitoring and Control in the Same Package!



Control Solutions' i.Report Model VP3-3690, offers an array of advanced features for remote alarm monitoring, control, and data logging. The VP3-3690, equipped with cellular and/or satellite modems, is designed for use with remote monitoring web servers such as Control Solutions' LogMyData® web portal. The VP3-3690 can also operate without modems, doing local data logging to a Flash card. Data is then uploaded later via direct USB connection.

The VP3-3690 is designed for serious control applications such as well head flare control. The thermocouple inputs are intended for high temperature monitoring. The heavy duty relays can operate solenoids, valves, and motor starters. Expand control to include additional Modbus devices such as power and gas analyzers or additional programmable controllers such as Control Solutions' ValuPoint series.

LogMyData® is a complete solution for monitoring virtually any equipment. The VP3-3690 installed on your equipment uses cellular technology to report to the LogMyData cloud server. You receive notifications via text message, email, or voice when something happens that you need to know about. You can log into the web portal from anywhere, anytime to see current status of your equipment.

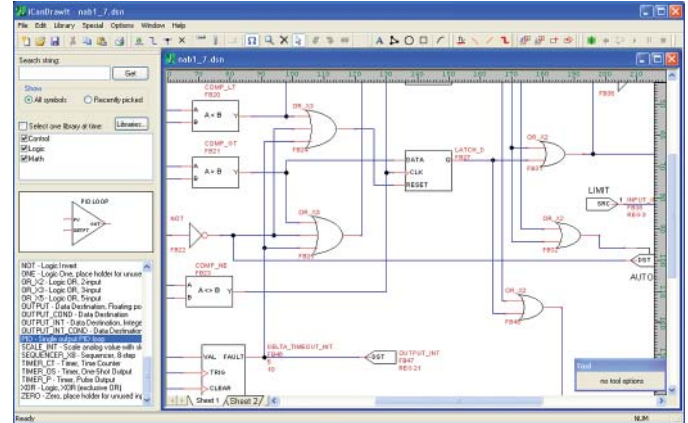


# i.Report Cellular/Satellite Global Remote Telemetry & Control Model VP3-3690



## VP3-3690 DEVICE FEATURES:

- 14 Universal inputs
  - 0-10VDC, thermistor, dry contact
  - 0-30VDC range on 2 inputs for battery monitoring
  - 4-20mA with external resistor
  - 16-bit sigma-delta converter, self calibrating
- 4 Thermocouple inputs
  - Type K
  - Cold junction compensation and linearization included
  - Non-isolated inputs, requires isolated thermocouples
- 10 Discrete inputs
  - Voltage sense or dry contact closure to ground
  - Pulse count capability on 2 inputs
- 8 Discrete outputs
  - Form C relays
  - 10A rated load @ 28VDC or 120VAC
  - Socketed for easy replacement
- Communications options
  - 4G LTE cellular data modem
  - Iridium satellite (used alone or as backup to cellular)
  - No communications (connect via USB to download data)
- 2GB data flash for event and data logging
- Battery backed real time clock for timestamps
- Programmable soft PLC included
- Modbus RTU master/slave port
- CAN 2.0b J1939 Engine monitoring port
- Over the air control
- Over the air firmware update (cellular only)
- Internal temperature sensor
- Hardened RS-485 serial port (Modbus RTU)
- USB port (connects to laptop for service)
- 32-bit ARM7 processor, 512K Flash
- 128K EEPROM for configuration storage
- Operates from 10-30VDC or 12-24VAC
- Operating temperature -20 °C to +70°C
- DIN rail mounted
- Dimensions including rail mount: 4.65”H x 10.35”W x 3.5”D



The i.Report Model VP3-3690 includes a field programmable soft PLC. Control Solutions' i.CanDrawIt® graphical programming tool is used to easily create programs.

Connect your PC to the VP3-2290 via its USB port for live debugging of your i.CanDrawIt® program. All data objects are accessible to the soft PLC programming environment. By writing to data objects that are configured with alarm thresholds, your program can trigger events to be called in to the web portal on demand. Simple threshold rules are applied automatically, but the soft PLC capability allows you to create complex alarm algorithms.

Visit our web site for

- Full details
- User Guides & Software Downloads
- Pricing
- On-Line Ordering

[www.csimn.com](http://www.csimn.com)



**CONTROL SOLUTIONS MINNESOTA**

380 OAK GROVE PKWY, SUITE 100 • PO BOX 10789

ST. PAUL, MN 55110-0789

VOICE (651) 426-4410 • FAX (651) 426-4418

TOLL FREE 1-800-872-8613

© 2018 Control Solutions, Inc. LogMyData® is a registered trademark of Control Solutions, Inc.