

i.Report VP3-2290 Cellular Remote Telemetry Unit



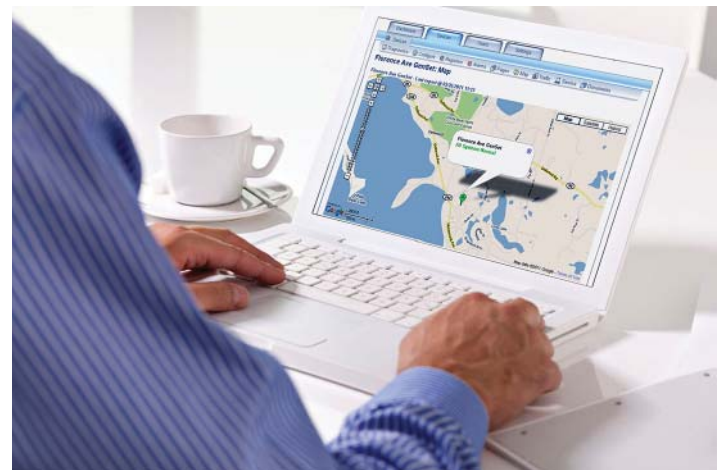
**CONTROL SOLUTIONS
MINNESOTA**

Control Solutions' i.Report Global Remote Telemetry Unit, Model VP3-2290, offers an array of advanced features for wireless remote alarm monitoring and data logging. The VP3-2290 uses 4G LTE cellular service to connect with cloud based remote monitoring services such as Control Solutions' LogMyData® Cloud.

Control Solutions makes remote monitoring accessible and affordable regardless of how many sites you have to monitor, from one to many. The LogMyData Cloud provides a convenient way to check on the status of all your sites with just one web login. It also provides a convenient way to manage your alarm notification recipient list. The LogMyData Cloud is built on top of the IBM Cloud to ensure that you are well connected and well protected.

Event based remote monitoring will constantly look at data points and evaluate whether anything is wrong or about to go wrong. Remote monitoring can also provide long term trending or performance monitoring. Nothing is really wrong one way or the other, but you want to see some history for analytical purposes.

The i.Report remote monitoring devices report to the cloud. Apps running on the cloud then distribute notifications to the appropriate recipients via SMS text message, email, and/or voice call. Multiple users may be included in a notification group. In addition, the LogMyData Cloud supports notification escalation. The escalation means that if the original intended recipient does not respond to the alarm, additional recipients begin to receive the repeat notifications.



i.Report VP3-2290 Cellular Remote Telemetry Unit

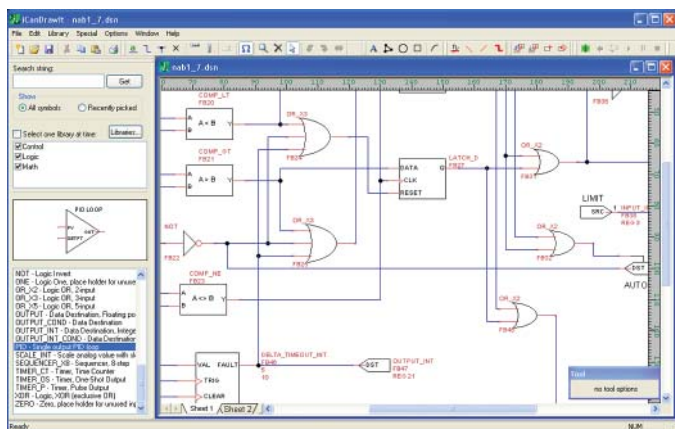
Control Solutions' i.Report Model VP3-2290 Global Remote Telemetry Unit is ideal for demanding remote alarm monitoring and data logging. The VP3-2290 uses 4G LTE cellular data modems for connecting to cloud based monitoring services via IP connection.

The VP3-2290 includes 12 hardware sensor inputs, which are universally configurable as analog, temperature (thermistor), or discrete/dry contact inputs. Two inputs have a 30V input range for directly monitoring batteries. The VP3-2290 includes 8 discrete inputs, 2 with pulse count capability. The VP3-2290 also includes 2 discrete outputs for functions such as generator start on command or local alarm indicator.

The VP3-2290 includes a Modbus RTU port which may operate in master or slave mode. The VP3-2290 may poll multiple Modbus slaves to greatly expand I/O capability. The VP3-2290 may also operate as a slave allowing a PLC in a larger system to write data to the VP3-2290.

The VP3-2290 includes a CAN/J1939 port for applications such as engine monitoring. The VP3-2290 can receive any standard J1939 message, including transport protocol. The VP3-2290 can initiate data read requests. The VP3-2290 can transmit J1939 messages sending data provided by the web portal or derived internally. Message construction is completely configurable, and transport protocol is supported in both directions.

The i.Report Model VP3-2290 includes a field programmable soft PLC. Control Solutions' i.CanDrawIt® graphical programming tool is used to easily create programs. Connect a PC via the VP3-2290's USB service port for live program debugging.



DEVICE FEATURES:

- 4G LTE cellular data modem
- Optional GPS receiver
- Modbus RTU master/slave port
- CAN 2.0b J1939 port
- Programmable soft PLC included
- Battery backed real time clock
- Over the air control
- Over the air firmware update
- 12 Universal inputs
 - 0-10VDC, thermistor, dry contact
 - 0-30VDC range on 2 inputs for battery monitoring
 - 4-20mA with external resistor
 - 16-bit sigma-delta converter, self calibrating
- 8 Discrete inputs
 - Voltage sense or dry contact closure to ground
 - Pulse count capability on 2 inputs
- 2 Discrete outputs
 - 30VDC 1A open drain FET
- Internal temperature sensor
- Hardened RS-485 serial port (Modbus RTU)
- USB port (connects to laptop for service)
- 32-bit ARM7 processor, 512K Flash
- 128K EEPROM for configuration storage
- Operates from 10-30VDC or 12-24VAC, 0.5A @ 24VDC
- DIN rail mounting, 100mm H x 105mm W x 60mm D
- Operating Temperature 0-70°C (-30 to +70°C optional)
- Humidity 5% to 90% non-condensing
- FCC Class A, CE Mark
- Listed to UL 916 and (Canadian) C22.2 No. 205-M1983



Visit our web site for

- Full details
- User Guides & Software Downloads
- Pricing & On-line Ordering

www.csimmn.com



CONTROL SOLUTIONS MINNESOTA

PO BOX 10789

ST. PAUL, MN 55110-0789

VOICE (651) 426-4410 • FAX (651) 426-4418

TOLL FREE 1-800-872-8613

© 2019 Control Solutions, Inc. LogMyData® is a registered trademark of Control Solutions, Inc.