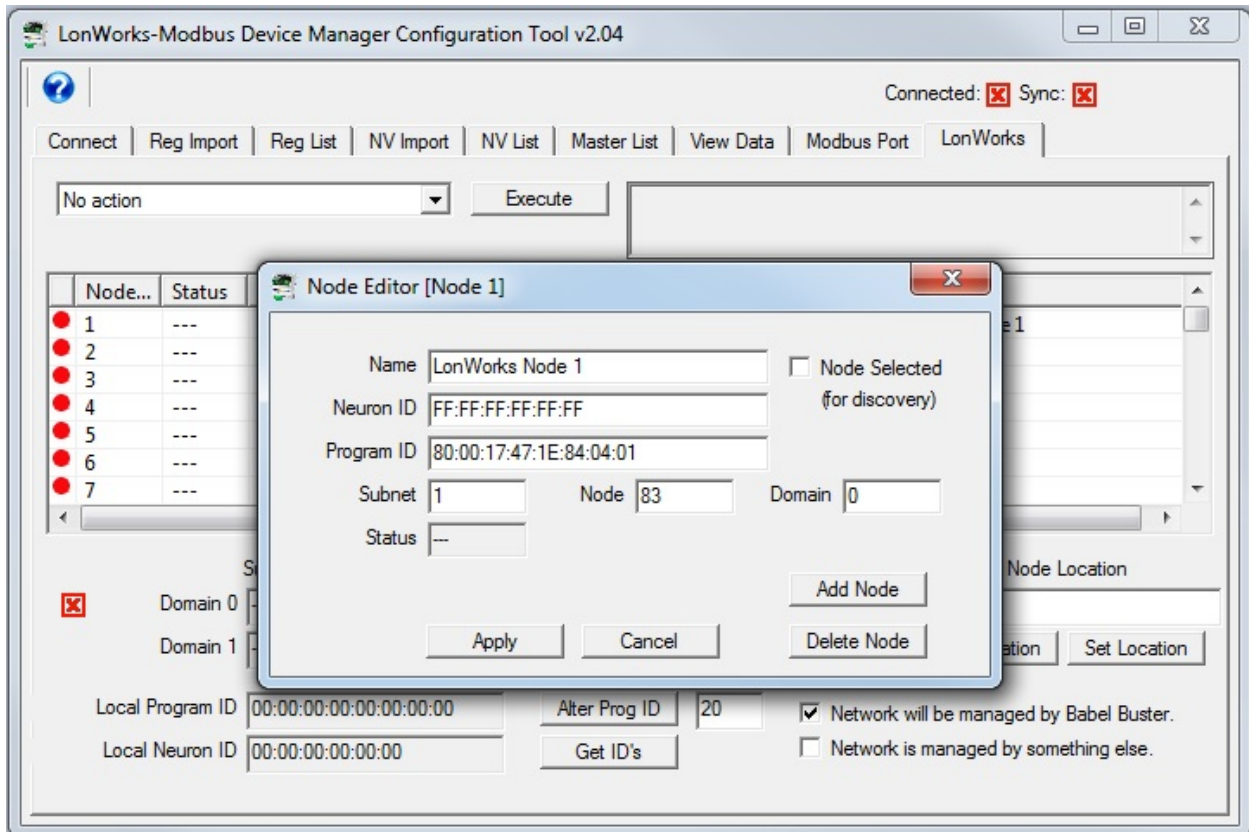


## Automatic Self-Installation Support for LonWorks -NB Gateways User Guide Addendum Sept. 2018

The LonWorks -NB gateways referred to in this addendum include BB2-2010-NB, BB2-2011-NB, BB2-6020-NB, BB2-3020-NB and BB2-7020-NB. These are the Non-Bound versions of LonWorks gateways with Modbus and BACnet protocols respectively. These devices are intended for putting unmanaged LonWorks devices on either a Modbus or BACnet network. All of the above mentioned models are collectively referred to as “Gateway” in the remainder of this document.

The term “self-install” in this case refers to a procedure whereby the Gateway will automatically search for and link itself to one or more LonWorks devices for non-bound polling, and where the Gateway is permitted to be the only LonWorks network manager. This is useful where a large number of Gateways will be deployed with identical configuration and the only variable being the Neuron ID of the LonWorks device(s) to be polled.

The self-installation is invoked by configuring the Gateway following all of the procedures already outlined in the User Guide, with the exception of node discovery. To invoke the self-installation (assumed to be at some later date), configure the device by entering the Program ID as you normally would, including subnet and node number, but edit the Neuron ID to be FF:FF:FF:FF:FF:FF. Once this edit is complete, write the node list to the Gateway. Setting the Neuron ID to all FF’s is illustrated below.



Upon power-up, if the Gateway sees a node table entry with a Neuron ID of all FF's, it will query the network looking for a node matching the Program ID in the table entry having the Neuron ID of all FF's. If found, it will then place the found Neuron ID in the node table, and save that to non-volatile memory thus making that node configuration take effect upon each subsequent power-up.

If the node to which the Gateway has linked itself by way of Neuron ID needs to be changed (to a different Neuron ID), the means of doing that is to hold the service pin down for 15 seconds. This will wipe out all Neuron IDs in the node table (for those entries having a non-zero Program ID) and replace them with all FF's, resulting in a new search for nodes with matching Program IDs. Holding the service pin down results in a "do-over" of the self-install process.

If you will be deploying a significant number of Gateways with the same configuration, Control Solutions can preload your configuration for you. Contact support (via the support ticket system) if you wish to have this done for you.

Note: If you purchased your gateway prior to October 2018, you will need to update firmware in your gateway in order to take advantage of this new self-installation feature. Firmware version for Modbus - NB gateways needs to be v3.02.9 or newer. Firmware version for BACnet -NB gateways needs to be v3.03.1 or newer. Please open a support ticket to gain access to firmware updates.