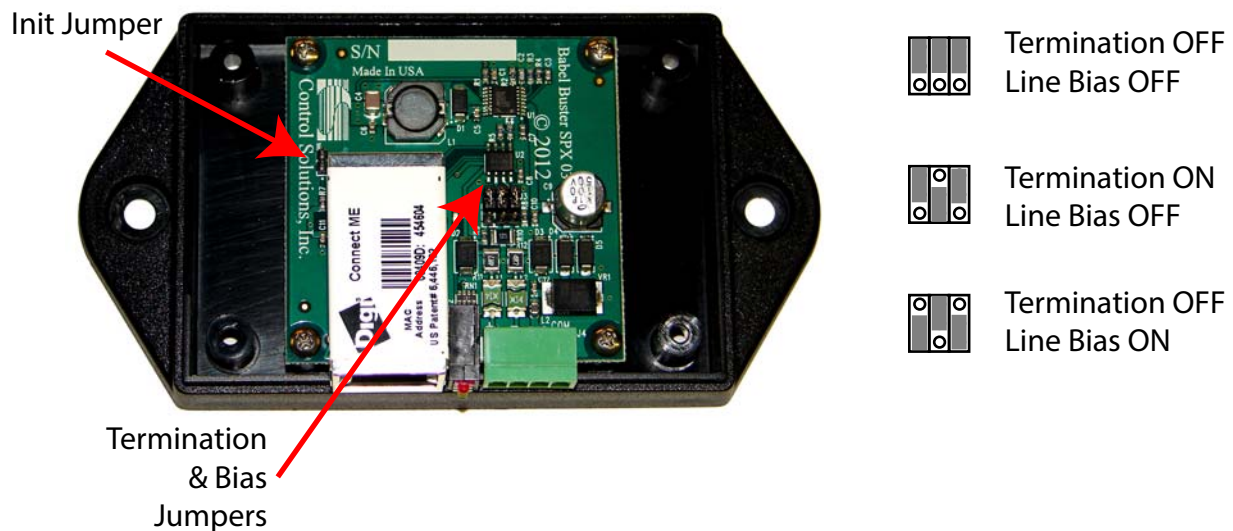


Termination and Bias jumpers for RS485 on Control Solutions, Inc. Babel Buster SPX, SPX Pro V2

Errata notice - July 2018

Termination/bias jumper positions were shown incorrectly in the user guide prior to this date. The correct positions are illustrated here.

Note: Termination should only be applied at ends of RS485 link. Line bias, if used, should only be applied one place on the link.



Init Jumper:

- Apply AFTER bootup to reset IP address and root password to defaults 10.0.0.101 and buster.
- Apply BEFORE power up to invoke TFTP firmware upgrade (must have server configured with TFTP and DHCP, and image.bin ready to be provided by BOOTP and TFTP).

WARNING: The circuit board inside the SPX is sensitive to static electricity or ESD discharge. DO NOT touch the circuit board without proper static protection, consisting of a ground strap worn around the wrist which has been specifically designed for that purpose.