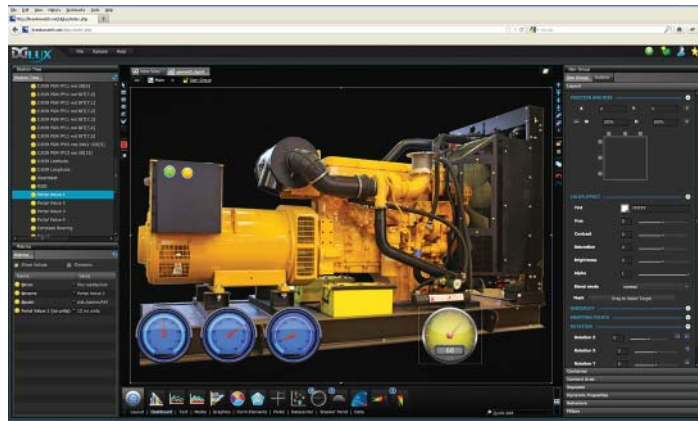




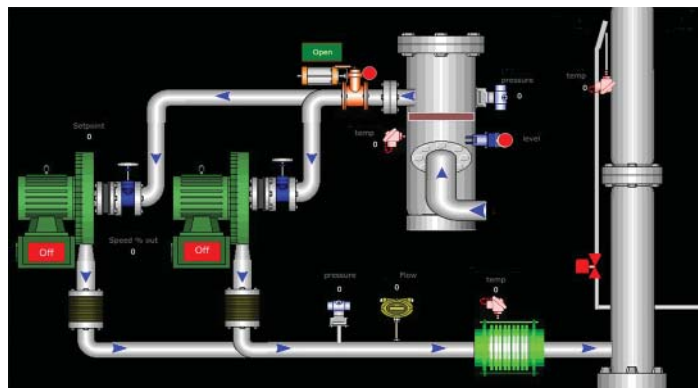
## LogMyData® Remote Monitoring for Equipment

LogMyData® Remote Monitoring for Equipment is a complete solution for monitoring virtually any equipment. The Control Solutions i.Report™ installed on your equipment uses cellular technology to report to the LogMyData cloud server. You receive notifications via text message, email, or voice when something happens that you need to know about. You can log into the web portal from anywhere, anytime to see current status of your equipment.

The LogMyData web portal provides stunning graphic capability for remote dashboards that can be configured any way you like to see it. There is no special software to buy or load, just open your browser and log in.



We have partnered with DGLogik to provide you with the DGLux visualization tools for every device on our portal. Create virtually any graphic for your application, and simply drag and drop to connect data points. View mode is included with every subscription. Developer mode is available for a very reasonable one-time license fee. The developer tools are accessible from any PC based web browser.



### What LogMyData® Means to End Users

- Remotely monitor operation
- Get automated notification of startups and shutdowns
- Get automated notification of potential problems
- Reduce down time
- Reduce or eliminate trips to site to check on equipment
- Track critical performance data remotely
- Automated dispatch of service delivery

### What LogMyData® Means to Providers

- Faster response time
- Faster issue resolution
- Increased value to customer
- Lower cost of maintaining service contracts
- Reduce trips to site, go when actually needed
- Improve efficiency of revenue stream

### Works with Virtually Any Equipment

We can monitor older equipment with switch contacts for alarms, or newer equipment with communication networks such as Modbus RTU. We can interface to any industry standard sensor or actuator, and a variety of third party monitoring equipment. The remote monitoring station can run on solar and/or wind power - we have tested i.Report running on solar power through the winter in Minnesota!

**Improve Your Bottom Line with LogMyData on the Front Line.**



There are typically two questions that remote monitoring seeks to ask:

- (1) Is anything wrong?
- (2) Is something about to go wrong?

Event based remote monitoring will constantly look at data points that provide answers to those questions, and notify you via email or cell phone when you need to know.

The other application for remote monitoring is long term trending or performance monitoring. Nothing is really wrong one way or the other, but you want to see some history. Trend monitoring will periodically record data points and archive them in a database. You access that database at your convenience via a dedicated web site.



Visit [logmydata.com](http://logmydata.com) for technical details on i.Report Model VP3-2290 and other monitoring device options.

#### LogMyData monitors any of these using i.Report™:

- Sensors that generate 4-20mA or 0-10VDC signals
- Switches, relays, dry contacts
- Power meters with Modbus
- Modbus RTU and J1939 built in
- Other protocols accessible via Control Solutions network gateways, including BACnet and LonWorks.

#### LogMyData offers flexible notifications

- SMS text messages, email, automated voice call
- Alert escalation, acknowledgement configurable by user

#### LogMyData offers flexible data retrieval

- Online data graphs and customized graphics
- Export CSV files ready for spread sheet processing

#### LogMyData notification rules are flexible

- Template based rule configuration
- Notifications sent immediately upon alert
- Notification if monitoring device stops reporting
- Notification generated when preventive maintenance due

#### LogMyData includes service records

- Preventive maintenance tracked automatically
- Arbitrary service records may be entered by users
- Every event may have user notes attached

#### LogMyData includes flexible controls

- Change setpoints or send data to any register
- Do a remote start on a generator
- Reset counters

#### LogMyData includes GPS tracking capability

- Geofence alarms - notify when equipment moves
- Tracking in transit

#### LogMyData includes flexible connectivity options

Cellular: CDMA, GPRS, 3G  
 Satellite: Iridium  
 Wired Internet

Visit our web site for

- Full details
- On-line Ordering

[www.logmydata.com](http://www.logmydata.com)

[www.csimmn.com](http://www.csimmn.com)



**CONTROL SOLUTIONS MINNESOTA**

380 OAK GROVE PKWY, SUITE 100 • PO BOX 10789  
 ST. PAUL, MN 55110-0789  
 VOICE (651) 426-4410 • FAX (651) 426-4418  
 TOLL FREE 1-800-872-8613

© 2017 Control Solutions, Inc. LogMyData® is a registered trademark of Control Solutions, Inc. All other trademarks or registered trademarks are property of their respective owners.