

Babel Buster Pro



CONTROL SOLUTIONS, INC.
MINNESOTA

Babel Buster® Pro
The Most Intelligent Connection Yet
Between BACnet and SNMP!



Includes Table Walker
and Trap Receiver!
Custom Programmable, too!



Very UPS Friendly!

New Babel Buster Pro Enhancements

- Flexible Trap Receiver
- Automatic Table Walker
- Script Basic with SNMP Enhancements

Control Solutions' Babel Buster® Pro-V230 is an enhanced gateway with advanced features to support connecting BACnet IP and MS/TP to SNMP v1 and v2c. A variant of the Pro-V230 also includes support for connecting devices having a proprietary serial protocol to SNMP or BACnet IP.

The Pro-V230 includes an automatic table walker with multiple algorithms making it suitable for walking the sparse alarm table found in UPS systems implementing RFC 1628. The table walker can easily translate the alarm table into a series of BACnet objects for easy access by a BMS.

The Pro-V230 includes a trap receiver supporting both v1 and v2c traps. The template driven trap receiver provides multiple algorithms for recognizing traps, and can easily place trap information into BACnet objects. If more complex treatment of trap information is needed, Script Basic can be used to process traps and place resulting data into BACnet objects.

Control Solutions' Babel Buster® Pro-V210 is an enhanced gateway with advanced features to support connecting Modbus TCP and RTU to SNMP v1 and v2c. A variant of the Pro-V210 also includes support for connecting devices having a proprietary serial protocol to SNMP or Modbus TCP. All SNMP features of the Pro series are common to both Modbus and BACnet versions of the Pro gateways.

Babel Buster® Network Gateways
More Power. More Capacity.
More Features. Less Expensive.
No Drivers to Buy.
Easy to Configure Yourself.

BACnet · Modbus · SNMP
LonWorks · Custom

Control Solutions' Babel Buster® Network Gateways are known for their low cost and ease of use. You can solve a variety of connectivity problems with a Babel Buster gateway.

The Babel Buster operates as a native device on two or more networks at the same time. To a BACnet network, it looks like a BACnet device. To a Modbus network, it looks like a Modbus device. To a LonWorks network, it looks like a LonWorks device that can be installed using LNS tools like LonMaker®.

Our newest LonWorks gateways simplify connecting legacy LonWorks equipment to updated BACnet or Modbus networks. The only tools needed for commissioning are a USB cable and the configuration software downloaded for free from csimn.com.

www.csimn.com



Babel Buster Family

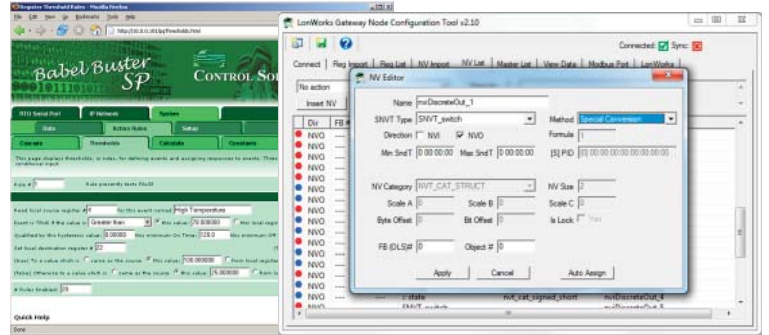
The list illustrated here is representative of the many gateways we offer. Visit www.csimn.com for a full list.



- **BBPro V230**
BACnet IP, MS/TP - SNMP Gateway
- **BBPro V210 • SPX Pro V2**
Modbus TCP, RTU - SNMP Gateways
- **BB2-2010 • BB2-2011 • BB2-6020**
• **BB2-2010-NB • BB2-2011-NB • BB2-6020-NB**
Modbus RTU, TCP - LonWorks Gateways
- **BB2-3010 • BB2-3060**
BACnet MS/TP - Modbus RTU, TCP Gateway
- **BB2-3020 • BB2-7020**
• **BB2-3020-NB • BB2-7020-NB**
BACnet IP, MS/TP - LonWorks Gateways
- **BB2-7010-01 • BB2-7010-02**
• **BB2-7010-06 • BB2-7010-07 • BB2-7010-08**
BACnet IP - Modbus - SNMP - WiFi Sensor Gateway
- **BB2-7030-01 • BB2-7030-02**
BACnet IP - MS/TP Router
BACnet IP, MS/TP - Modbus TCP - SNMP Gateway
- **BB2-6010 • BB-SPX • BB-SP**
Modbus RTU, TCP - SNMP Gateway
- **BB2-6040 • BB2-7040**
BACnet, Modbus - MaxStream ZigBee Gateway
- **BB-SP • Custom**
BACnet IP - Serial ASCII Proprietary

Babel Buster 2 Tools

All of Control Solutions' Babel Buster gateways include free configuration tools to make the job of configuring the gateway as easy as possible to do yourself. Some gateways include web based tools served up by the gateway itself. Non-web gateways connect to your laptop via MS/TP and the MTX002 adapter. Our newest LonWorks gateways connect directly to your laptop via USB with no adapter.



Advanced Features of the New SPX Pro-V2

- Trap Receiver
- Automatic Table Walker
- Custom Programmable
- Script Basic Built In



Technical info: [csimn.com](http://www.csimn.com)

Get complete product details, data sheets, web demos, software downloads, PICS and XIF files, and more. Most models UL916 Listed.

Pricing info: buy.csimn.com

We sell direct and ship world wide. To see wholesale pricing, register at www.shopcsimn.com. Wait for the confirmation email, then log in again. Your wholesale pricing will automatically be displayed when logged in with wholesale registration (retail prices listed otherwise).



CONTROL SOLUTIONS, INC.

380 OAK GROVE PKWY, SUITE 100 • PO BOX 10789
ST. PAUL, MN 55110-0789
VOICE (651) 426-4410 • FAX (651) 426-4418
TOLL FREE 1-800-872-8613