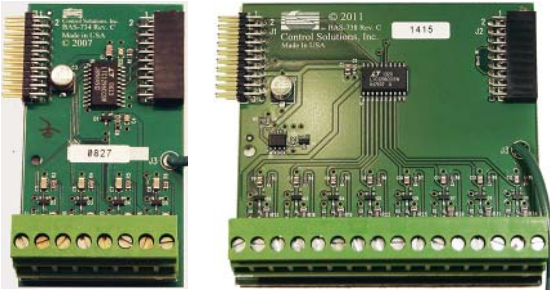


## ANALOG INPUT

### BAS-734      BAS-738



#### FEATURES

- 4 Inputs (734) or 8 Inputs (738)
- 12-bit resolution on ranges of 0-10VDC, 4-20mA, Thermistor
- Channels individually configurable via jumper blocks
- Optionally socketed range resistors for higher voltage inputs
- Plug-in screw terminal block
- Snap track mounting, 3.25”H x 1.75”W (734), x 3.30”W (738)

The BAS-730 series of Analog Input modules are configurable to accommodate 0-10VDC, 4-20mA or 10K Thermistor inputs, with each channel individually configurable. In addition, the range resistors for voltage inputs may be socketed to allow channel by channel configuration of full scale input, up to 48VDC.

## ANALOG OUTPUT

### BAS-742



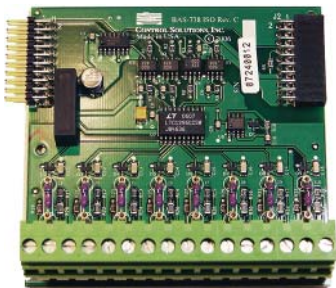
#### FEATURES

- 2 Outputs individually configurable
- Jumper configurable for 0-10VDC or 4-20mA output ranges
- 4-20mA output drives 250Ω load max.
- 8-bit DAC resolution
- Jumper selectable manual override potentiometer per output
- Plug-in screw terminal block
- Snap track mounting, 3.25”H x 2.00”W

The BAS-740 series of Analog Output modules are designed to provide the common 0-10VDC or 4-20mA output levels for process control. The output types are individually configurable per channel.

## ISOLATED ANALOG INPUT

### BAS-738/3



#### FEATURES

- 8 Inputs, optically isolated A/D, on-board DC/DC converter
- 12-bit resolution on ranges of 0-10VDC, 4-20mA, Thermistor
- Same as BAS-738, with isolation added
- Also accepts bipolar input -10V to +10VDC
- Snap track mounting, 3.25”H x 3.30”W

The BAS-738/3 is useful for measurements where common floats at some voltage other than ground. Other than the isolation and bidirectional capability, it is the same as the standard BAS-738.

Visit our web site for

- Full details
- User Guides & Software Downloads
- Pricing & On-line Ordering

[www.csimn.com](http://www.csimn.com)



**CONTROL SOLUTIONS MINNESOTA**

PO BOX 10789

ST. PAUL, MN 55110-0789

VOICE (651) 426-4410 • FAX (651) 426-4418

TOLL FREE 1-800-872-8613

## BAS-700 SERIES SNAP TRACK MOUNTING



### FEATURES

- Low cost alternative to DIN rail mounting
- Simply screw track to panel or enclosure
- Simply snap in boards and slide together
- Cut track to length - shipped in 1' or 2' sections
- Exact lengths cut to order
- All modules 3.25" high
- All wiring done via plug-in screw terminals at bottom of track
- Expansion bus handles up to 8 I/O modules per processor
- Bus accepts custom OEM and third-party modules

## BUS EXTENDER BAS-EXT/n

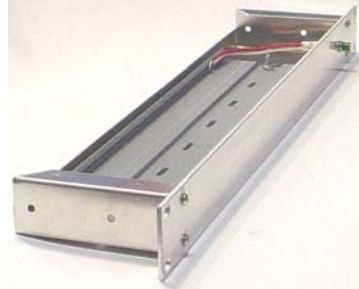


### FEATURES

- Provides ribbon cable connector to break system into 2 tracks
- BAS-EXT/2 includes 2" cable, BAS-EXT/6 includes 6" cable
- Use 2" cable for back to back tracks
- Use 6" cable for over-under tracks
- Snap track mounting, 3.25"H x 0.70"W

The BAS-EXT/n provides packaging alternatives when a system's track length becomes a problem. By using the BAS-EXT/n, a full system can be rack mounted in standard 19" racks. Call us for more information on rack mount options.

## BAS-700 SERIES RACK MOUNT KIT, 1U



### FEATURES

- 19-inch 1U rack for BAS-700 snap tracks
- Natural aluminum construction
- Front panel can be customized
- Useable track length 13" (included)

This rack mount option for the BAS-700 series provides room for a smaller system, occupying less space. A power-on indicator is included on the front panel. (Circuit boards excluded.)

This rack kit is intended for prototype use. If you are interested in a production design, please contact [sales@csimn.com](mailto:sales@csimn.com) to discuss design details for a quote.

NOTE: Used primarily for combination of BAS-7050 and BAS-7124. Other modules require 2U racks.

Visit our web site for

- Full details
- User Guides & Software Downloads
- Pricing & On-line Ordering

[www.csimn.com](http://www.csimn.com)



**CONTROL SOLUTIONS, INC.**

380 OAK GROVE PKWY, SUITE 100 • PO BOX 10789

ST. PAUL, MN 55110-0789

VOICE (651) 426-4410 • FAX (651) 426-4418

TOLL FREE 1-800-872-8613