

AddMe[®] Jr.
i.CanDoIt[®]



CONTROL SOLUTIONS, INC.
MINNESOTA



AddMe Jr.

*14 I/O Points in a
Modbus Client/Server*

*12 Analog/Universal Inputs
2 Discrete (FET) Outputs
2 Pulse/Discrete Inputs
(shared analog/universal)
RTU Gateway*

*Scheduling
Astronomical Clock
Data Logging
Event Notification*

i.CanDoIt[®] AddMe Jr.

Control Solutions' *i.CanDoIt[®] AddMe Jr.* includes all of the features of AddMe III-IP in a scaled down package. AddMe Jr. features 12 universal inputs. Two of the universal inputs support pulse counting, either rate or totalizing. Two FET outputs may drive small DC loads directly, or operate larger external relays.

AddMe Jr. includes powerful web based features, including:

- Data logging and event logging, trending
- Email notification and email data log delivery
- Weekly and on-demand real time scheduling
- Astronomical clock and time/date clock
- Programmability using PL/i structured language
- SNMP v2 agent for Get/Set access to data points
- SNMP trap generation based on rules
- Template rule generation for traps, emails, output triggers
- Modbus TCP client and server concurrently
- Built-in gateway to Modbus RTU
- Integral web server with Flash file system
- User designed web pages with CGI access to data points
- Web based configuration and monitoring
- Cell phone friendly event notification capability
- Dynamic DNS support
- DNS host lookup, DHCP
- FTP data file access & firmware upgrades
- Telnet console session for account management
- Web client for server driven remote monitoring

Remote Monitoring for Discrete Sensors
Remote Monitoring for Anything Modbus
Stand-Alone Alarm Responses

FEATURES of Model AMJR-14

- Web based configuration & operation
- Ethernet 10/100BaseT protocol support
HTTP • Modbus TCP • SNMP
- EIA-485 protocol support
Modbus RTU Master
- User web pages
- Data logging, scheduling, email notifications
- Programmable
- 12 Analog/universal inputs
 - 0-10VDC, Thermistor, dry contact
 - Software selectable input type
 - 10-bit resolution
 - Pulse input capability on 2 channels
- 2 Discrete outputs
 - Open drain FET, current sink 1A @ 24VDC
- Powered by 10-30VDC or 24VAC 50/60 Hz
- DIN rail mounting, 100mm H x 70mm W x 60mm D
- FCC Class B, CE Mark

www.csimn.com

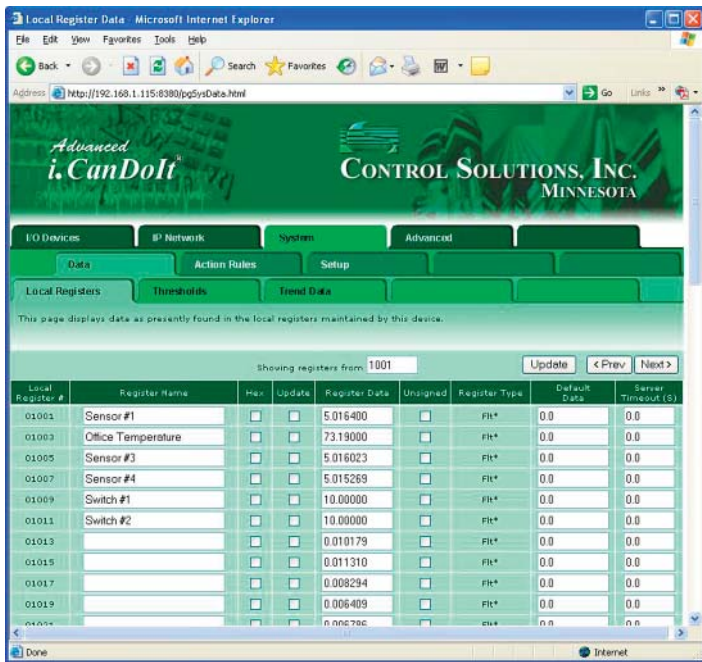


i.CanDoIt® AddMe Jr.

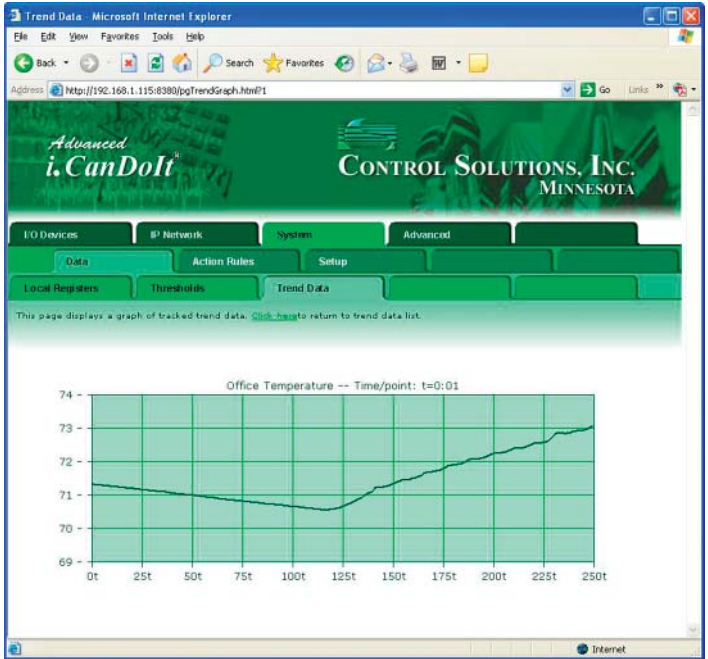
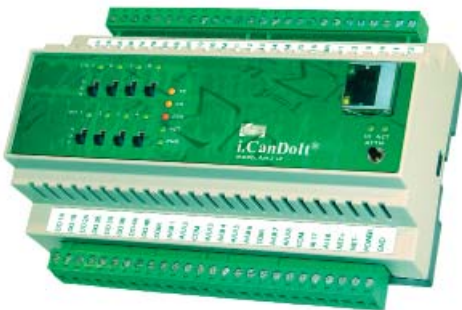
Control Solutions' *i.CanDoIt*® AddMe Jr. packs a smaller package with the most commonly used capabilities in our growing family of popular web appliances.

Functions:

- Data Logging
- Remote Monitoring & Alarms
- Event Notification
- Scheduling (Astronomical or Time/Date)
- User Programmable Control Algorithms
- User Programmable Web Pages



When you need the *i.CanDoIt* capabilities with more I/O channels, look at Model AM3-IP.



i.CanDoIt® is available now. Visit www.csimn.com for more information, a guided tour of the web server, and an online demo copy of the entire web site contained in AddMe Jr.

- Visit our web site for
- Full details
 - User Guides & Software
 - Pricing
 - On-line Ordering



www.csimn.com



CONTROL SOLUTIONS, INC.
 380 OAK GROVE PKWY, SUITE 100 • PO BOX 10789
 ST. PAUL, MN 55110-0789
 VOICE (651) 426-4410 • FAX (651) 426-4418
 TOLL FREE 1-800-872-8613

© 2016 Control Solutions, Inc. *i.CanDoIt*® is a registered trademark of Control Solutions, Inc. Modbus® is a registered trademark of Schneider Electric Corp.