

AddMe® Jr.  
i.CanDoIt®

  
CONTROL SOLUTIONS MINNESOTA



## AddMe Jr.

14 I/O Points in a  
BACnet IP Client/Server

12 Analog/Universal Inputs  
2 Discrete (FET) Outputs  
2 Pulse/Discrete Inputs  
(shared analog/universal)  
RTU Gateway

Scheduling  
Astronomical Clock  
Data Logging  
Event Notification

## i.CanDoIt® AddMe Jr.

Control Solutions' *i.CanDoIt*® AddMe Jr. includes all of the features of AddMe III-IP in a scaled down package. AddMe Jr. features 12 universal inputs. Two of the universal inputs support pulse counting, either rate or totalizing. Two FET outputs may drive small DC loads directly, or operate larger external relays.

AddMe Jr. includes powerful web based features, including:

- Data logging and event logging, trending
- Email notification and email data log delivery
- Weekly and on-demand real time scheduling
- Astronomical clock and time/date clock
- Template rule generation for traps, emails, output triggers
- BACnet IP client and server concurrently
- COV Subscription support
- Modbus RTU Master
- Programmability using PL/i structured language
- Integral web server with Flash file system
- User designed web pages with CGI access to data points
- Web based configuration and monitoring
- Cell phone friendly event notification capability
- Dynamic DNS support
- DNS host lookup, DHCP
- FTP data file access & firmware upgrades
- Web client for server driven remote monitoring

## FEATURES of Model AMJR-14-BN

- I/O points and undedicated BACnet IP objects
  - 300 Input objects each of types AI, BI, MSI
  - 100 Output objects each of types AO, BO, MSO
  - Output objects commandable with priority array
  - 100 Value objects each of types AV, BV, MSV
- COV Subscription support
- BACnet IP client for interface to other servers
- Ethernet 10/100BaseT BACnet IP
- Web based configuration & operation, User web pages
- Data logging, scheduling, email notifications
- Freely programmable with structured control language
- 12 Analog/universal inputs
  - 0-10VDC, Thermistor, dry contact
  - Software selectable input type
  - 10-bit resolution
  - Pulse input capability on 2 channels
- 2 Discrete outputs
  - Open drain FET, current sink 1A @ 24VDC
- RS-485 Modbus RTU Master
- Powered by 10-30VDC or 24VAC 50/60 Hz
- DIN rail mounting, 100mm H x 70mm W x 60mm D
- Operating temperature -40C to +85C
- Humidity 5% to 90% non-condensing
- FCC Class B, CE Mark

[www.csimn.com](http://www.csimn.com)



## ***i.CanDoIt*® AddMe Jr.**

Control Solutions' *i.CanDoIt*® AddMe Jr. packs a smaller package with the most commonly used capabilities in our growing family of popular web appliances.

### Functions:

- Data Logging
- Remote Monitoring & Alarms
- Event Notification
- Scheduling (Astronomical or Time/Date)
- User Programmable Control Algorithms
- User Programmable Web Pages

### *BACnet Protocol Implementation Conformance Statement (Abbreviated)*

*Date: 30 October 2008*

*Vendor Name: Control Solutions, Inc.*

*Product Name: AddMe Jr. BACnet IP Web Server*

*Product Model Number: AMJR-14-BN*

*Applications Software Version: 3.01*

*Firmware Revision: 3.01*

*BACnet Protocol Revision: 2*

*Product Description: Web server providing BACnet IP I/O, plus web based features including local scheduling and alarm notification via email.*

### *BACnet Standardized Device Profile (Annex L):*

- ▶ *BACnet Smart Sensor (B-SS)*
- ▶ *BACnet Smart Actuator (B-SA)*

### *List all BACnet Interoperability Building Blocks Supported (Annex K):*

*DS-RP-B, DS-RPM-B, DS-WP-B, DS-COV-B, DS-COVP-B,  
DM-DDB-B, DM-DOB-B, DM-RD-B*

*Segmentation Capability: (None)*

### *Standard Object Types Supported:*

*Object types: AI, AO, AV, BI, BO, BV, MSI, MSO, MSV, DEV (all static)  
See additional documentation for optional & proprietary properties.*

### *Data Link Layer Options:*

- ▶ *BACnet IP (Annex J)*

### *Device Address Binding:*

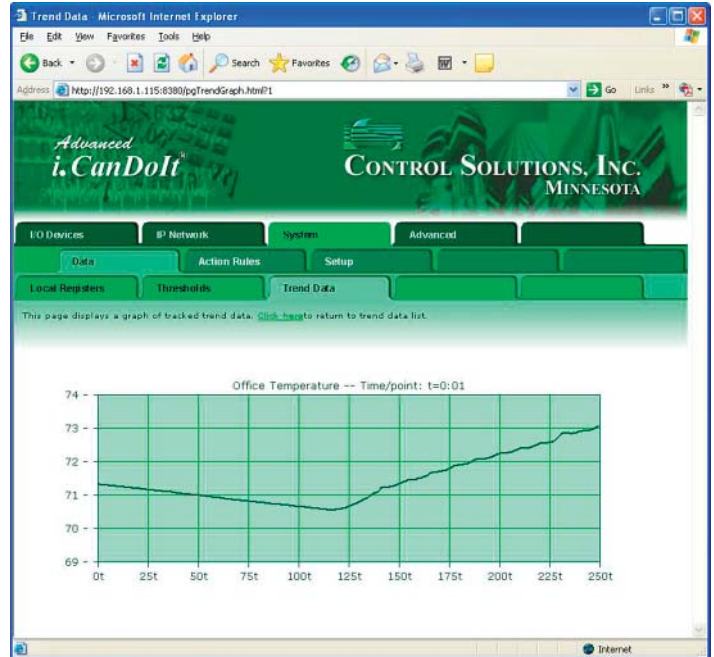
*Is static device binding supported? No*

*Networking Options: (None)*

*Character Sets Supported: ANSI X3.4*

*If this product is a communication gateway, describe the types of non-BACnet equipment/networks(s) that the gateway supports:*

*Modbus RTU gateway included, functions as Modbus master transferring data between Modbus registers in remote device and BACnet objects in local device.*



*i.CanDoIt*® is available now. Visit [www.csimn.com](http://www.csimn.com) for more information, a guided tour of the web server, and an online demo copy of the entire web site contained in AddMe Jr.

*Visit our web site for*

- *Full details*
- *User Guides & Software*
- *Pricing*
- *On-line Ordering*

***www.csimn.com***



**CONTROL SOLUTIONS MINNESOTA**

PO BOX 10789

ST. PAUL, MN 55110-0789

VOICE (651) 426-4410 • FAX (651) 426-4418

TOLL FREE 1-800-872-8613

© 2019 Control Solutions, Inc. *i.CanDoIt*® is a registered trademark of Control Solutions, Inc. BACnet® is a registered trademark of American Society of Heating, Refrigerating and Air-Conditioning Engineers, Inc.