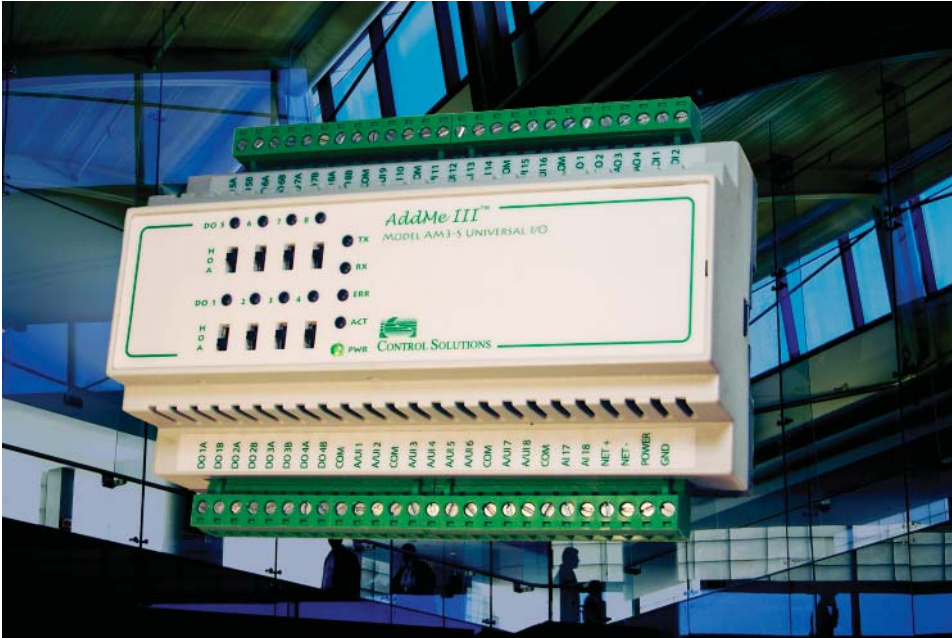


# AddMe<sup>®</sup> Family Modbus<sup>®</sup> I/O



## AddMe III

32 I/O Points in a  
Single RTU Slave

18 Analog/Universal Inputs  
4 Analog Outputs  
8 Discrete (Relay) Outputs  
2 Pulse/Discrete Inputs  
Programmable

Integer and  
Floating Point  
Holding Registers

## AddMe III Modbus I/O

Control Solutions' AddMe III features 18 analog/universal inputs with configurable type and scaling. You can individually configure each universal input for high resolution analog, fast analog, or discrete input. When configured as an analog input, the continuously self-calibrating sigma-delta converter produces 15-bit resolution with high noise immunity. When configured as a discrete or fast analog input, the converter switches to 10-bit resolution at 128 samples per second for fast response. All I/O points are accessed as Modbus holding registers.

Floating point holding registers provide data from the analog I/O points. In addition, analog (universal) inputs are mirrored to integer registers and may be treated as on/off values. Linearization tables are provided for 3K, 10K and 20K type II, III, and IV thermistors. Input type and scaling is configured by writing to additional holding registers.

All configuration properties are accessible via holding registers. You can configure AddMe III from any Modbus master. To simplify and streamline this process, we offer a free PC based configuration tool you can download from our web site. This tool allows you to simply select options from lists and enter scaling factors without keeping track of which holding registers you need to look at. This tool also stores your entire configuration in an XML file on your PC so you can easily replicate your configuration later. The "send all" function will download your entire configuration to a new device.

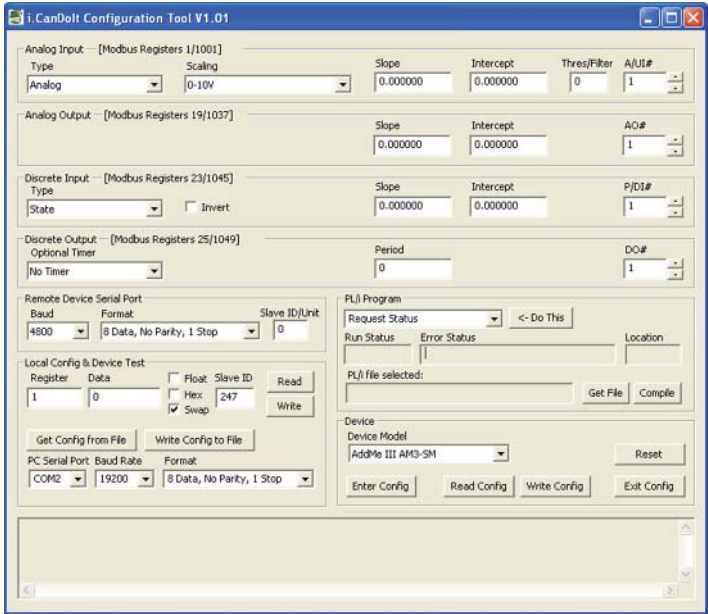
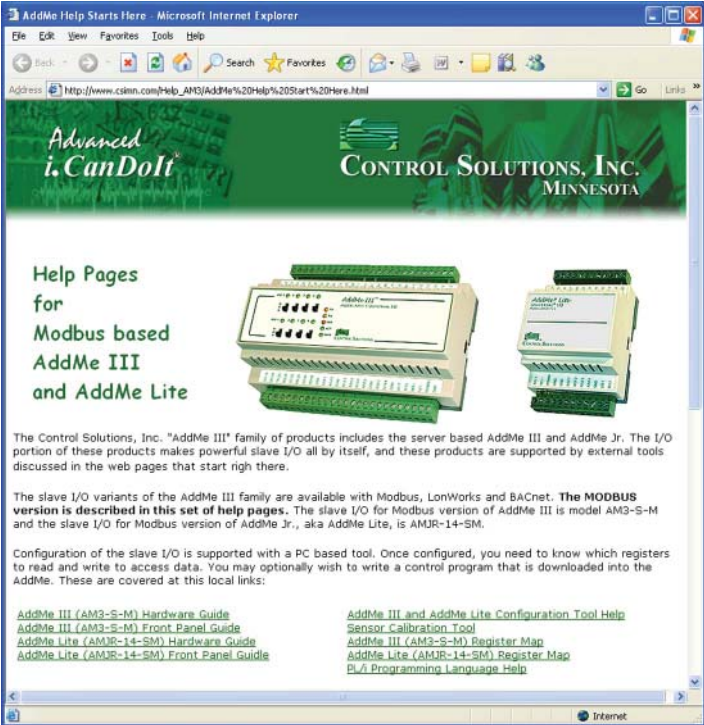
## FEATURES of Model AM3-SM

- 18 Analog/universal inputs (16 universal + 2 analog only)
  - 0-10VDC, Thermistor, dry contact
  - 0.1% reference, up to 16-bit resolution
  - Software selectable input types (16 channels)
  - Continuously self calibrating sigma-delta converter
- 4 Analog outputs
  - 4-20mA (0-20mA)
  - 8-bit resolution
- 8 Discrete outputs
  - Form A relay, 5A @ 120VAC
  - HOA switches & status indicators
- 2 Discrete inputs
  - TTL to 24VDC on/off state input
  - Pulse count frequency input to 5kHz
  - Totalizing count input with non-volatile storage
- Modbus RTU slave, integer and floating point registers
- EIA-485 half duplex (2-wire)
- Powered by 18-30VDC or 24VAC 50/60 Hz
- Power Consumption: 0.3A @ 24VDC
- DIN rail mounting, 100mm H x 155mm W x 60mm D
- LED indicators for power and communications
- Pluggable screw terminal blocks
- Operating temperature -30°C to +70°C
- Humidity 5% to 90% non-condensing
- FCC Class A, CE Mark

[www.csimn.com](http://www.csimn.com)



The AddMe Family of Modbus I/O includes browsable help pages and free PC based configuration tools.



Our PC based configuration tool simplifies setup of analog input type and scaling, analog output scaling, and discrete I/O timing parameters. You can also compile and download your program via this tool.

Here are some of the things you will find in the online browsable help pages:

- Sensor wiring diagrams
- Wiring terminal list and I/O wiring diagrams
- Indicator guide
- Sensor calibration tool (interactive)
- Modbus register map
- Configuration tool user guide
- Programming language help

You can preview the online help at [www.csimn.com](http://www.csimn.com) or download the entire "site" for offline browsing on your PC. The configuration tool software is included in the download zip file. All you need to get started, besides the AddMe III and your PC, is an RS-232 to RS-485 converter. All configuration is done via the Modbus RTU port.

- Visit our web site for
- Full details
  - User Guides & Software
  - Pricing
  - On-line Ordering



[www.csimn.com](http://www.csimn.com)



**CONTROL SOLUTIONS MINNESOTA**  
 PO BOX 10789  
 ST. PAUL, MN 55110-0789  
 VOICE (651) 426-4410 • FAX (651) 426-4418  
 TOLL FREE 1-800-872-8613

© 2019 Control Solutions, Inc. AddMe® is a registered trademark of Control Solutions, Inc. Modbus®, is a registered trademark of Modbus, Inc.