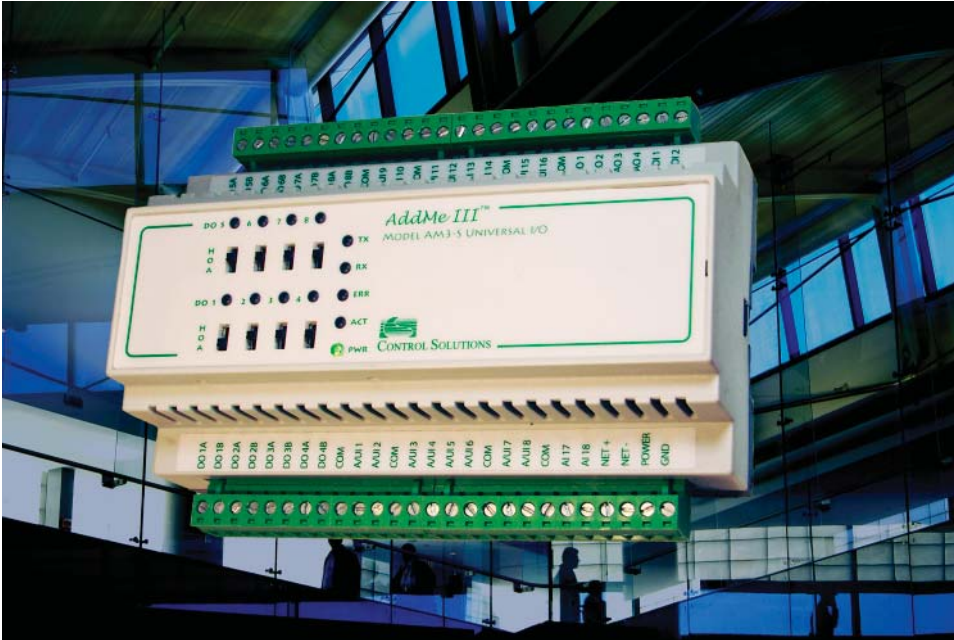


AddMe<sup>®</sup> Family  
BACnet<sup>®</sup> I/O



CONTROL SOLUTIONS, INC.  
MINNESOTA



## AddMe III

32 I/O Points in a  
Single MS/TP Slave

18 Analog/Universal Inputs  
4 Analog Outputs  
8 Discrete (Relay) Outputs  
2 Pulse/Discrete Inputs  
Programmable

40 AI objects  
4 AO objects  
8 BO objects  
60 MI objects

## AddMe III Programmable BACnet Slave I/O

Control Solutions' AddMe III features 18 analog/universal inputs with configurable type and scaling. You can individually configure each universal input for high resolution analog, fast analog, or discrete input. When configured as an analog input, the continuously self-calibrating sigma-delta converter produces 15-bit resolution with high noise immunity. When configured as a discrete or fast analog input, the converter switches to 10-bit resolution at 128 samples per second for fast response. All I/O points are accessed as BACnet objects (AI, AO, BO).

Analog Input objects provide data from the analog I/O points. Linearization tables are provided for 3K, 10K and 20K type II, III, and IV thermistors. Input type and scaling is configured by writing to BACnet object properties. Additional uncommitted writeable objects are available for data exchange with the user program.

All configuration properties are accessible via object properties. You can configure AddMe III from any BACnet MS/TP client. To simplify and streamline this process, we offer a free PC based configuration tool you can download from our web site. This tool allows you to simply select options from lists and enter scaling factors without keeping track of which object properties you need to look at. This tool also stores your entire configuration in an XML file on your PC so you can easily replicate your configuration later. The "send all" function will download your entire configuration to a new device.

## FEATURES of Model AM3-SM

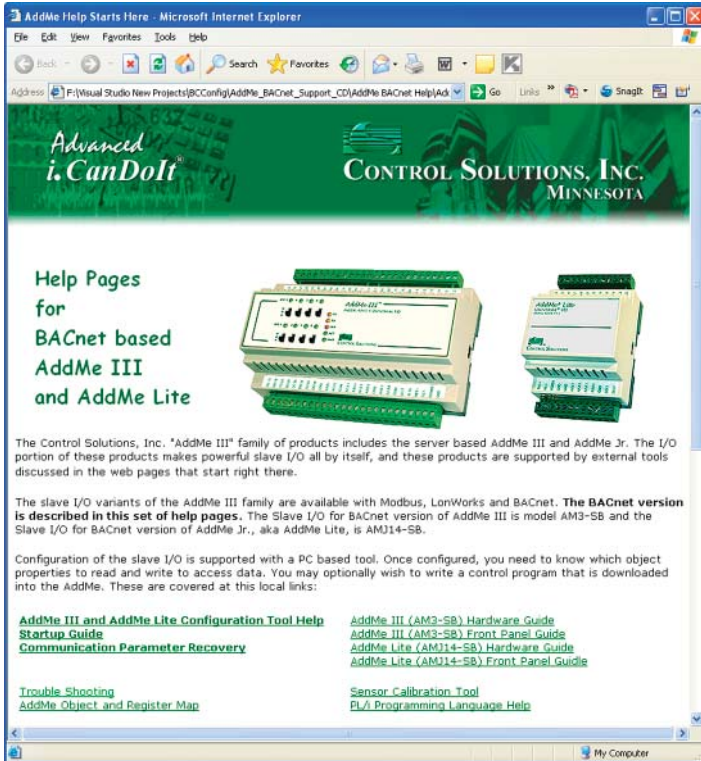
- 18 Analog/universal inputs (16 universal + 2 analog only)
  - 0-10VDC, Thermistor, dry contact
  - 0.1% reference, up to 16-bit resolution
  - Software selectable input types (16 channels)
  - Continuously self calibrating sigma-delta converter
- 4 Analog outputs
  - 4-20mA (0-20mA)
  - 8-bit resolution
- 8 Discrete outputs
  - Form A relay, 5A @ 120VAC
  - HOA switches & status indicators
- 2 Discrete inputs
  - TTL to 24VDC on/off state input
  - Pulse count frequency input to 5kHz
  - Totalizing count input with non-volatile storage
- BACnet MS/TP Slave, 9600, 19200, 38400, 76800 baud
- Powered by 18-30VDC or 24VAC 50/60 Hz
- Power Consumption: 0.3A @ 24VDC
- DIN rail mounting, 100mm H x 155mm W x 60mm D
- LED indicators for power and communications
- Pluggable screw terminal blocks
- Operating temperature -30°C to +70°C
- Humidity 5% to 90%
- FCC Class A, CE Mark

[www.csimn.com](http://www.csimn.com)

# AddMe<sup>®</sup> Family BACnet<sup>®</sup> I/O



## CONTROL SOLUTIONS, INC. MINNESOTA



### BACnet Protocol Implementation Conformance Statement (Abbreviated)

Date: 8 January 2008  
Vendor Name: Control Solutions, Inc.  
Product Name: AddMe III BACnet I/O  
Product Model Number: AM3-SB  
Applications Software Version: 1.01  
Firmware Revision: 1.01  
BACnet Protocol Revision: 2

Product Description: Programmable 32-point BACnet MS/TP slave I/O.

### BACnet Standardized Device Profile (Annex L):

- ▶ BACnet Smart Sensor (B-SS)
- ▶ BACnet Smart Actuator (B-SA)

### List all BACnet Interoperability Building Blocks Supported (Annex K):

DS-RP-B, DS-RPM-B, DS-WP-B, DW-WPM-B,  
DM-DDB-B, DM-DOB-B, DM-RD-B

### Segmentation Capability: (None)

### Standard Object Types Supported:

Object types: AI, AO, BO, MI, DEV, FILE, PROGRAM (all static)  
See additional documentation for optional & proprietary properties.

### Data Link Layer Options:

- ▶ MS/TP slave (Clause 9), baud rate(s): 9600, 19200, 38400, 76800

### Device Address Binding:

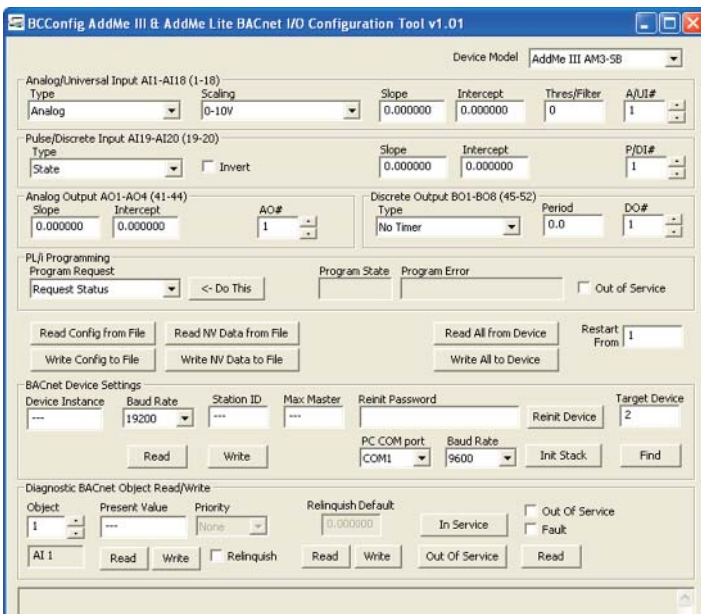
Is static device binding supported? No

### Networking Options: (None)

### Character Sets Supported:

ANSI X3.4

Online help included on the support CD or downloaded from our web site includes wiring diagrams, sensor calibration tool, BACnet object map, configuration tool user guide, and programming language help. Our source level program simulator and debugger is also free. Our PC based configuration tool simplifies setup of analog input type and scaling, analog output scaling, and discrete I/O timing parameters.



Visit our web site for

- Full details
- User Guides & Software
- Pricing
- On-line Ordering

[www.csimn.com](http://www.csimn.com)



## CONTROL SOLUTIONS, INC.

380 OAK GROVE PKWY, SUITE 100 • PO BOX 10789

ST. PAUL, MN 55110-0789

VOICE (651) 426-4410 • FAX (651) 426-4418

TOLL FREE 1-800-872-8613