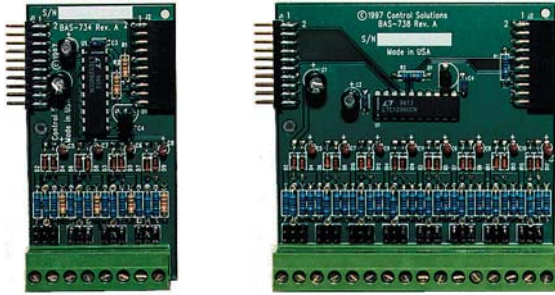


ANALOG INPUT

BAS-734

BAS-738



FEATURES

- 4 Inputs (734) or 8 Inputs (738)
- 12-bit resolution on ranges of 0-10VDC, 4-20mA, Thermistor
- Channels individually configurable via jumper blocks
- Optionally socketed range resistors for higher voltage inputs
- Plug-in screw terminal block
- Snap track mounting, 3.25" H x 1.75" W (734), x 3.30" W (738)

The BAS-730 series of Analog Input modules are configurable to accommodate 0-10VDC, 4-20mA or 10K Thermistor inputs, with each channel individually configurable. In addition, the range resistors for voltage inputs may be socketed to allow channel by channel configuration of full scale input, up to 48VDC.

ANALOG OUTPUT

BAS-742



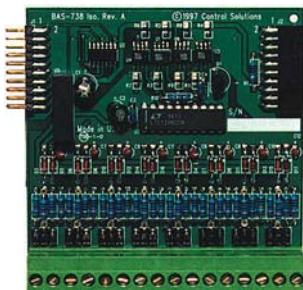
FEATURES

- 2 Outputs individually configurable
- Jumper configurable for 0-10VDC or 4-20mA output ranges
- 4-20mA output drives 250Ω load max.
- 8-bit DAC resolution
- Jumper selectable manual override potentiometer per output
- Plug-in screw terminal block
- Snap track mounting, 3.25" H x 2.00" W

The BAS-740 series of Analog Output modules are designed to provide the common 0-10VDC or 4-20mA output levels for process control. The output types are individually configurable per channel.

ISOLATED ANALOG INPUT

BAS-738/3



FEATURES

- 8 Inputs, optically isolated A/D, on-board DC/DC converter
- 12-bit resolution on ranges of 0-10VDC, 4-20mA, Thermistor
- Same as BAS-738, with isolation added
- Also accepts bipolar input -10V to +10VDC
- Snap track mounting, 3.25" H x 3.30" W

The BAS-738/3 is useful for measurements where common floats at some voltage other than ground. Other than the isolation and bidirectional capability, it is the same as the standard BAS-738.

ANALOG OUTPUT

BAS-748



FEATURES

- Designed specifically for light dimming interfaces
- 8 current sinking outputs, 0-100mA @ 10VDC
- 8-bit DAC resolution
- Jumper selectable potentiometer for manual override
- Snap track mounting, 3.25" H x 4.25" W

The BAS-748 Analog Output module is designed for operation of dimming ballasts in lighting control applications. Its current sinking output is compatible with several commercially available fluorescent and HID ballasts.



DC/DC CONVERTER BAS-DC48



FEATURES

- Isolated 48VDC input
- 12VDC @ 2.1A output (or 24VDC @ 1.0A)
- Used for positive ground Telecom installations
- Plug-in screw terminal block
- Snap track mounting, 3.25”H x 2.60”W

The BAS-DC48 is designed to allow a BAS-700 system to operate from the negative 48VDC supply found in positive ground telecommunications equipment installations. The BAS-DC48 provides 500 volts of isolation between input and output. The +12VDC (or +24 VDC) output is used to power any BAS-700 series processor module.

BUS EXTENDER BAS-EXT/n



FEATURES

- Provides ribbon cable connector to break system into 2 tracks
- BAS-EXT/2 includes 2” cable, BAS-EXT/6 includes 6” cable
- Use 2” cable for back to back tracks
- Use 6” cable for over-under tracks
- Snap track mounting, 3.25”H x 0.70”W

The BAS-EXT/n provides packaging alternatives when a system’s track length becomes a problem. By using the BAS-EXT/n, a full system can be rack mounted in standard 19” racks. Call us for more information on rack mount options.

ISOLATED MILLIVOLT CONDITIONER • BAS-MVC



FEATURES

- 50mV and 100mV input ranges
- 5 VDC output
- 1000V isolation input to output
- ±7.5VDC @ 2mA isolated excitation output
- 24VDC power input required
- Plug-in screw terminal block
- Snap track mounting, 3.25”H x 3.20”W

The BAS-MVC is designed to isolate and amplify low level signals such as those found in current shunt applications. The BAS-MVC also provides isolated excitation for bridge or load cell type sensors. The module can be configured for 50mV or 100mV input ranges. The output of the BAS-MVC may be wired to any analog input module in the BAS-730 series.

PLUG-IN TERMINAL OPTIONS



All of our connectors are plug-in screw terminal blocks. The standard BAS-700 series connector is the “Phoenix” type terminal block (the green ones). We offer as an option the barrier style screw terminal block which plugs into the same header.



CONTROL SOLUTIONS, INC.

2179 FOURTH ST., STE. 2-G • PO BOX 10789

WHITE BEAR LAKE, MN 55110-0789

VOICE (651) 426-4410 • FAX (651) 426-4418

TOLL FREE 1-800-872-8613 • <http://www.csimm.com>