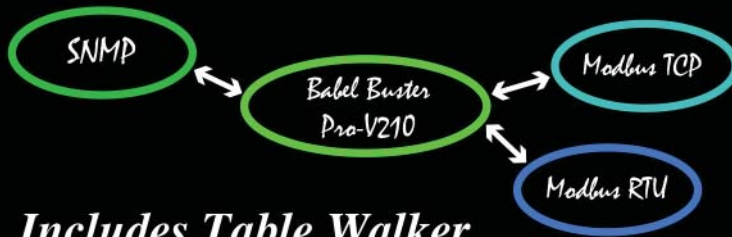


Babel Buster Pro V210 MODBUS-SNMP NETWORK GATEWAY



CONTROL SOLUTIONS MINNESOTA

Babel Buster® Pro The Most Intelligent Connection Yet Between Modbus and SNMP!



*Includes Table Walker
and Trap Receiver!*



New Pro Enhancements

- Flexible Trap Receiver
- Automatic Table Walker
- Script Basic with SNMP Enhancements
- User Defined Register Set
- Character String Support

Control Solutions' Babel Buster® Pro-V210

is an enhanced gateway with advanced features to support connecting Modbus RTU and TCP to SNMP v1 and v2c. The Pro-V210 also includes support for connecting devices having a proprietary serial protocol to SNMP or Modbus TCP.

The Pro-V210 includes an automatic table walker with multiple algorithms making it suitable for walking the sparse alarm table found in UPS systems implementing RFC 1628. The table walker can easily translate the alarm table into a series of Modbus coils for easy access by a PLC.

The Pro-V210 includes a trap receiver supporting both v1 and v2c traps. The template driven trap receiver provides multiple algorithms for recognizing traps, and can easily place trap information into holding registers for Modbus access. If more complex treatment of trap information is needed, such as character string interpretation, Script Basic can be used to process traps and place resulting data into Modbus registers.

The Pro-V210 allows the user to create the Modbus register set. The "registers" can be 16, 32, or 64 bit (with any registers greater than 16 bits being automatically treated as a series of Modbus registers). Holding registers can be integer, unsigned integer, or IEEE 754 floating point, single or double precision. The Pro-V210 also supports character strings as a series of registers having two ASCII characters per register. These character registers can be read and written from Script Basic as a single string variable. Although all local registers are allocated as holding registers, they can also be accessed as input registers, discrete inputs, or coils.

The Pro-V210 allows the serial port to be used for a proprietary serial protocol instead of Modbus RTU. When used for interpreting a proprietary protocol, a Script Basic program would be written to send and receive via the serial port as applicable, and interact with the local Modbus registers (and MIB variables) under user program control.

The Pro-V210 is itself an SNMP device. Local Modbus registers can be assigned to any of five branches of the local MIB for remote access by other SNMP clients. The local data may be accessed as scaled integer, 64-bit counters, 32-bit or 64-bit floating point (RFC 6340), or character strings (Octet strings) with automatic reformatting. An SNMP Get to the Pro-V210 will read local registers and an SNMP Set will write the local registers. If local registers are mapped via Modbus to write to other Modbus devices, then SNMP Set will result in writing to a Modbus device.

The Pro-V210 can send v1 or v2c traps based on threshold rules created via templates in the Pro-V210's web UI. When data in the local registers meets the rule criteria, the trap will be sent. Traps can be triggered by reading other Modbus devices or by any other source of local data including Script Basic.

The Pro-V210 includes an SNMP client that can read and write MIB variables in other SNMP devices. When reading, the remote device's data will be stored in a local register. When writing, data will be taken from a local register and sent to the remote SNMP device via SNMP Set.

The Pro-V210 can be Modbus RTU master or slave (user selectable), and Modbus TCP client and server (concurrently). Maps created via templates in the Pro-V210's web UI will read and write other Modbus devices, copying their data to local registers when read, or sending data from local registers to those devices when written.

The Pro-V210 includes template based rules for simple calculations and data tests. These can be used for simple data manipulation. If more complex formula based data treatment is needed, Script Basic has access to all local registers. Reformatting from one register type to another is automatic. Therefore, a simple copy rule will transform a number into an ASCII string for use in sending traps.

Babel Buster Pro V210

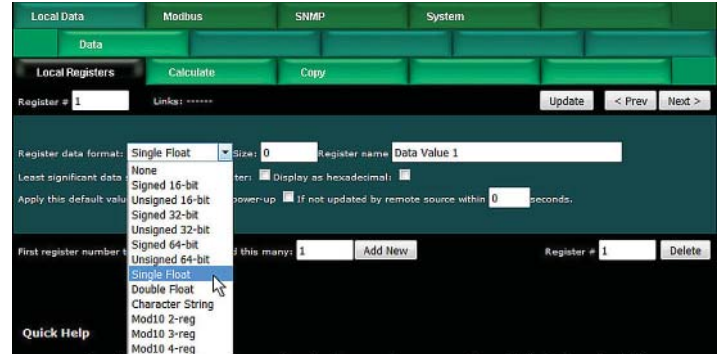
MODBUS-SNMP NETWORK GATEWAY



CONTROL SOLUTIONS MINNESOTA

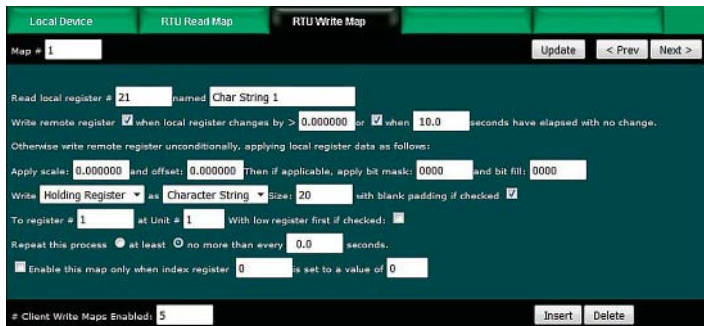
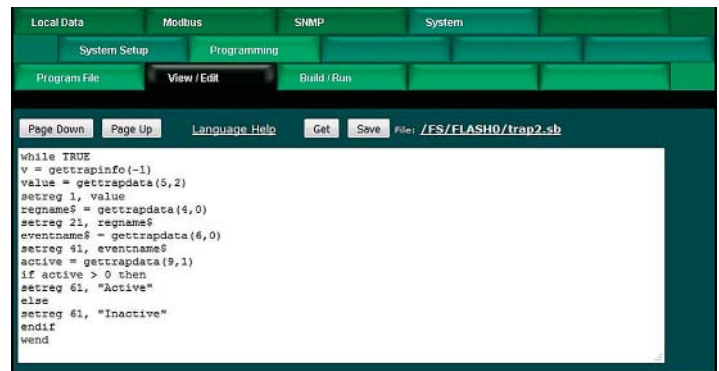
FEATURES

- Modbus RTU RS-485 Master or Slave
 - Modbus TCP Client and Server
 - Modbus TCP over Ethernet 10/100BaseT
 - SNMP v1, v2c Get/Set access to all data points
 - SNMP v1, v2c table walker
 - SNMP v1, v2c trap receiver
 - SNMP v1, v2c trap generation, user programmable criteria
 - Up to 2000 local registers
 - Up to 500 MIB variables
 - 16, 32, 64-bit integer, 32 or 64-bit IEEE 754 floating point, Mod10
 - ASCII character string support (UTF-8)
 - Supports Modbus "coils", input registers, holding registers
 - Modbus register mapping configured via web interface
 - Modbus (master) polling interval configurable per point
 - Configure via web pages
 - Flash file system, 10X capacity, for XML configuration files
 - Online help, Quick Help section at bottom of every web page
 - Password protection for web log-on and ftp
 - Field upgradeable firmware upload via ftp
 - DHCP or static IP address
 - Hardened EIA-485 transceiver for Modbus RTU
 - Optional RS-232 transceiver (in place of RS-485)
 - Powered by 10-30VDC or 12-24VAC 50/60 Hz
 - Power Consumption: 0.1A @ 24VDC
 - DIN rail mounting, 100mm H x 70mm W x 60mm D
 - Pluggable screw terminal block for power & RTU network
 - Operating temperature -40°C to +85°C
 - Humidity 5% to 90% non-condensing
 - FCC Class A, CE Mark
 - Listed* to UL 916 and (Canadian) C22.2 No. 205-M1983
- * BBPRO-V210 is UL Listed with RS-485, listing of new RS-232 option is pending.



Configuration of the gateway is done via the web pages served by the internal web server. The user simply fills in templates. The entire configuration is saved in the internal Flash file system in XML format. This file may be exported to replicate additional copies of the configured device, or for backup.

Script Basic provides unprecedented power and flexibility for creating the ultimate SNMP trap receiver. A special set of commands have been added to Basic to provide access to received traps. Basic can also trigger sending of traps by writing to local registers that are mapped via templates.



Interface to a Modbus RTU alphanumeric display device has never been easier. The Pro-V210 recognizes a series of Modbus holding registers as a single character string. The built-in Script Basic includes richly featured character string manipulation and recognizes the series of registers as a single character string.



Visit our web site for

- Full details
- User Guides & Software Downloads
- Pricing & On-line Ordering

www.csimmn.com



CONTROL SOLUTIONS MINNESOTA

PO BOX 10789

ST. PAUL, MN 55110-0789

VOICE (651) 426-4410 • FAX (651) 426-4418

TOLL FREE 1-800-872-8613

© 2019 Control Solutions, Inc. Babel Buster® is a registered trademark of Control Solutions, Inc. Modbus® is a registered trademark of Modbus Organization.